



UCLA Center for the Study of Women

2012-2013 Annual Report

July 1, 2012–June 30, 2013

KATHLEEN MCHUGH

Director

Contents

- A. MISSION 5
- B. SUMMARY OF ACCOMPLISHMENTS
 - 1. Most Important Accomplishment 6
 - 2. CSW’s Impact on UCLA 8
- C. PROGRESS REPORT ON GOALS
 - 1. Complete five-year WSMALA Project 9
 - 2. Continue progress in the second year of NEH/Mazer project..... 11
 - 3. Create and implement a Faculty Manuscript Workshop for Junior Faculty 14
 - a. Fall Workshop: Allyson Field..... 15
 - b. Winter Workshop: Uri McMillan..... 16
 - c. Spring Workshop: Leisy Abrego 17
 - 4. Expand the Life(Un)Ltd. project..... 18
 - a. Seminars for LU Members 18
 - b. Public Lectures..... 18
 - c. Symposium 18
 - d. Special Issue 19
 - 5. Continue Fundraising Initiative..... 20
 - 6. Enhance Intellectual Networks, Climate, and Communities 21
 - a. Research Scholars 21
 - b. Graduate Student Initiative..... 25
 - Fellowships, Grants and Awards* 25
 - Thinking Gender*..... 28
 - Dissertation Writing Retreat/Writing Groups*..... 29
 - Employment Opportunities and Specialized Training*..... 31
 - c. Newsletter 32
 - d. Website and Social Networking 34
 - e. Cultural Politics of Seeds 37
 - f. Policy Briefs 38
- D. RESEARCH, TEACHING, AND PROGRAMMING
 - 1. Core and Affiliated Faculty 40
 - 2. External Funding..... 43
 - 3. Scholarly and Instructional Activities 44
 - a. Programming..... 44
 - b. Partnerships 47

4. Publications Generated as a Result of CSW Activity	53
a. Publications from CSW Faculty Development Grants	53
b. Publications by CSW Research Scholars.....	54

E. BUDGET AND STAFFING

1. Organizational Chart.....	59
2. Changes in Budget and Staffing.....	59
3. Budget and Staffing Priorities.....	59

F. STRATEGIC PLAN

1. Goals and Objectives	60
-------------------------------	----

APPENDIXES

1. Cultural Politics of Seeds: Participants	
2. Cultural Politics of Seeds: Program	
3. Life (Un)Ltd - Workshop Participants and Speakers	
4. Life (Un)Ltd - Special Issue	
5. Feedback from Kanner Next Generation Manuscript Workshop Participants	
6. Research Scholars	
7. Comments From CSW Research Scholars	
8. Awards and Grants- Committee Members	
9. Student Awards and Grants	
10. Student Travel Grants	
11. Thinking Gender 2013 Program	
12. Downloads from CSW's California Digital Library Site	
13. Feedback From Dissertation Writing Retreat Participants	
14. Newsletter Issues	
15. Videocasts/Views	
16. Blog Posts	
17. Social Networking Stats	
18. Policy Briefs - Distribution List	
19. Events	
20. Faculty Development Grant Recipients	
21. Staff and Personnel	
22. Fiscal Summary	
23. Development Funds	

A. Mission

Advancing Research on Women, Gender, and Sexuality through Innovation, Collegiality, and Mentorship

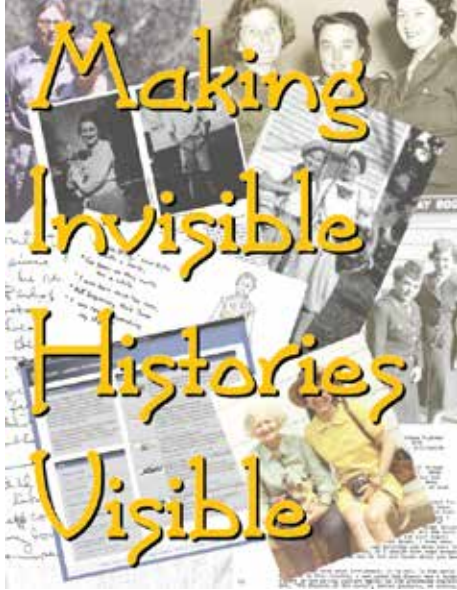
THE MISSION of the UCLA Center for the Study of Women (CSW) is to create and sustain a productive intellectual community dedicated to research pertaining to women, gender, and sexuality across all disciplines. Our multidisciplinary constituency includes UCLA faculty, graduate students, undergraduates, and community scholars in Los Angeles, but also extends, through our conferences and programming, to scholars doing research on gender, sexuality, and women's issues throughout the U.S. and around the globe.

We implement our mission through five interrelated strategies, including:

- Faculty and graduate student research through our Faculty Curator and Development Grant Programs, conferences, research working groups, workshops, and programs and through fundraising and grants to generate intra and extramural funding sources for the support and implementation of that research;
- Publication venues for the dissemination of scholarly research and sets up networks for communication and research sharing to facilitate intellectual community;
- Productive scholarly relationships within and beyond the academic community through our research, programming, and publications activities;
- Recruitment and retention efforts at UCLA through workshops, funding, and development focused specifically on junior faculty and through the networks of support we have developed to improve climate issues for underrepresented faculty and students
- Extensive support for graduate students through our Graduate Student Initiative, which includes a robust fellowship and grants program, research funding, professionalization workshops, programming, and employment.

Currently, CSW is fully engaged in all of these functions. Our mission has not changed over the past year. By refining goals and focusing on specific project-based fundraising, we have been highly successful in gaining new resources.

B. Summary of Accomplishments



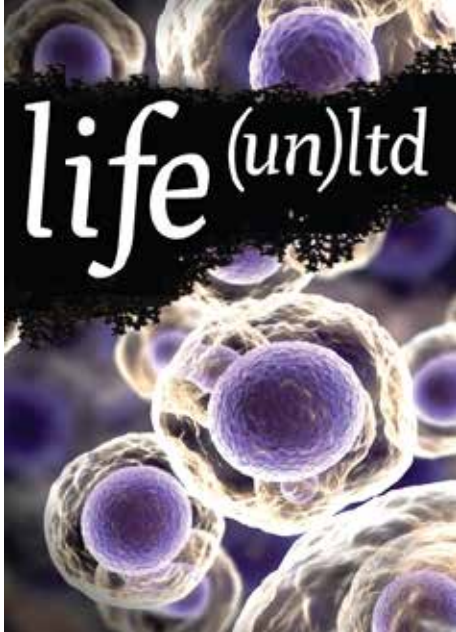
This project is already making a crucial contribution to the Los Angeles community, to UCLA, to the Mazer Archive, as well as to scholars all over the world who now have greater access to these extensive materials.

1. Most Important Accomplishment

This year, CSW's most important accomplishment was to systematically integrate research, programming, and productive intellectual collaboration in two prominent research projects: the three-year NEH project, "Making Invisible Histories Visible: Preserving the Legacy of Lesbian Feminist Activism and Writing in Los Angeles"; and the CSW multiyear research project, "Life (Un)Ltd" that this year featured the "Cultural Politics of Seeds" symposium. Each project convened multidisciplinary collaborators and stakeholders—CSW, the June L. Mazer Lesbian Archive (a community grassroots organization) and YRL Special Collections, in the case of the former, and Humanities, Life Sciences, Public Health, and Social Sciences scholars, together with practitioners and artists from all over the world, in the case of the latter.

In this second year of the NEH project, the project team exceeded the goals we had set, made and accomplished new goals pertaining to the Mazer's AV collection, worked with the library to establish new digitizing protocols that will extend far beyond this grant, and made accessible 22 fully processed, described, and digitized collections to a potentially global audience. During the period of this report, 100 analog audiocassettes have been digitized covering 100 hours of material; 4612 images scanned and finding aids for the first 27 collections are now available through the Online Archive of California, <http://www.oac.cdlib.org/>, greatly increasing access to the collections. The NEH/Mazer project continues to make crucial contributions to the Los Angeles community, to UCLA, to the Mazer Archive, as well as to scholars and the public all over the world.

B. Summary of Accomplishments



Life (Un)Ltd (LU) continued to bring campus and international science, social science, and humanities scholars together through a yearlong working group and speakers series. The project extended its exploration of feminism, science and technology studies, and race/postcolonialism to include issues of food studies, sustainable agriculture, the relation of horticultural science to feminist and race studies. This CSW/LU collaboration with Assistant Professor Allison Carruth (English), who works on food studies, culminated in a one and a half day spring 2013 conference on “The Cultural Politics of Seeds,” which brought together farmers, activists, academics, and artists to collaborate on issues of biodiversity, seed sovereignty, seed banking and the importance of feminist endeavors to the ongoing work of maintaining small-scale farming. See Appendixes 1 and 2.

B. Summary of Accomplishments

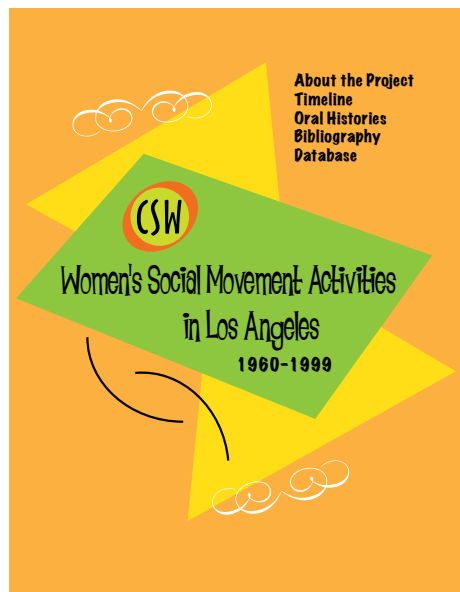
The CSW network of faculty along with our events, projects, and communications readily enhances the campus climate and quality of life of UCLA.

2. CSW's Impact on UCLA

CSW HAS AND CONTINUES to make a campuswide impact at UCLA. As our accomplishments this year indicate, CSW impacts the campus in multiple registers, which include fostering original research in north and south campus through research projects, events programming, publications, and direct funding to scholarly research; enhancing campus climate; and providing a variety of support programs for junior faculty as well as graduate and undergraduate students. This year, through donor funding, we created and instituted the “CSW Dr. Penny Kanner Next Generation Fellowships” that fund first manuscript workshops for junior faculty. Each brings together senior experts in the fields addressed by the candidate’s manuscript, from outside and inside UCLA, as well as junior faculty and a graduate student working in the same area. In addition to providing the junior faculty member with crucial feedback on their first book manuscript as they ready it for submission to the press, these workshops also provide mentorship across three generations: senior to junior faculty to graduate student. We held three of these highly successful workshops during AY 2012-13 and our first candidate has just received a book contract for her manuscript.

All of CSW’s initiatives are structured to have broad reach and impact across the entire campus, through interdisciplinary research projects that bring together scholars and graduate students from diverse backgrounds such as the Life (Un)Ltd project, to grants-based research that employs multiple graduate students in their fields of endeavor, to faculty grants such as the Faculty Curator Grant that brought Global Flashpoints to UCLA, and graduate student grants and fellowships such as CSW’s Irving and Jean Stone Dissertation Year Fellowship. The CSW network of faculty along with our events, projects, communications, and fellowships, such as the junior faculty manuscript workshops, readily enhances the campus climate and quality of work life at UCLA for both students and faculty.

C. Progress Report on Goals



DURING THE LAST ACADEMIC YEAR, CSW identified the following goals as part of our strategic plan. Following each item, we will report on our progress this year in relation to each specific goal. We will then detail our progress on our ongoing and new projects:

1. Complete five-year WSMALA Project

“From Protest to Policy: A History of Women’s Social Movements in Los Angeles 1960-1999” (WSMALA) is a five-year, donor-funded project that has documented women’s activism and its contribution to Los Angeles civic life in four areas: education, the arts, labor, and health. The project outcomes include an interactive timeline (<http://www.csw.ucla.edu/research/projects/womens-social-movement-activities-1960-1999/interactive-timeline>), a collection of extensive archival and bibliographic data, and oral history interviews with women activists who worked in each of these areas. These voices make a crucial contribution to the history of Los Angeles. CSW recently completed a set of eight interviews focused on higher education. These interviews add to and enhance the historical record of women’s activism in Los Angeles as oral histories on this topic are unique to WSMALA. One additional interview in this area is planned in the coming year. WSMALA also contributes substantially to the historical record on women’s social activism in the arts and labor. While both categories were comprehensively documented through oral histories in various Los Angeles archives during the 1970s to 1980s, more recent years are lacking. Additional goals for the final months of the project include creating a database of externally completed interviews that are related to WSMALA’s collection areas. Feminist health oral histories completed at California State, Long Beach for instance, which share a similar focus to WSMALA’s health category, will be linked to the project’s timeline in order to articulate a more complete historiography of women’s activism in Los Angeles.

From Fall 2012 through Spring 2013, one GSR was responsible for conducting interviews focused in higher education. Two additional subjects—Dr. Karen Brodtkin and Dr. Jane Bayes—were identified as significant figures in this area and pursued for interviews. All associated documents for these oral histories are complete, and in the coming year, the interviews will be added to CSW’s database and the Center for Oral History Research’s digital library.

C. Progress Report on Goals



Oral Histories

KAREN BRODKIN is Professor Emerita in the Departments of Anthropology and Women's Studies at UCLA. She is considered to be one of the founders of feminist anthropology. After receiving a degree in anthropology in 1963, Brodtkin pursued graduate schooling at Harvard University, but later transferred to the University of Michigan to complete her Ph.D., graduating in 1971. At Michigan, her studies engaged anthropology with issues of sexism and equality. She was recruited by Oakland University in 1968, where she taught until 1976. Thereafter, Brodtkin continued feminist anthropological research and teaching at Fordham, Clark, Duke, American and Oberlin universities.

Brodtkin was hired in 1987 by UCLA as the Chair of the Women's Studies interdepartmental program and as a Professor of Anthropology. In California, her activism efforts involved: labor unionization (i.e. HERE, SEIU, and SAGE), the Lincoln Place tenants, and Common Threads; on campus, Brodtkin vocally opposed Proposition 209 and SP-1/SP-2 initiatives and U.S. military involvement in Iraq as well as rallied for LGBT equality and for the establishment of a Department of Chicana/o studies. She retired in 2008, two years after receiving the Society for the Anthropology of North America's Prize for Distinguished Achievement in the Critical Study of North America. *Interviewer: Kimberlee Granholm*



JANE BAYES is a Professor of Political Science and Director of the Institute of Gender, Globalization, and Democracy at California State University, Northridge. She also is the Director of the International Social Science Council's Research Program on Gender, Globalization and Democratization (ISSC-GGD). Her teaching and research interests are in the areas of women and politics, political economy, and globalization and gender.

Bayes received her BA in Government from Smith College in 1960, and her Ph.D. in Political Science from UCLA in 1967. In 1968, CSUN—considered then as a hotbed for student activism—hired Bayes as Assistant Professor of Political Science; she created the school's first courses on minority politics, and successfully integrated women's issues into these courses. In the 1980s, Dr. Bayes was elected into the university's academic faculty senate, and served as Faculty President from 1984-1986, where she advocated for increased hiring of women and minority applicants.

Dr. Bayes, now 74, continues her career as a professor at CSUN, teaching courses focused on gender politics in the global economy. She received the "Phenomenal Woman Award" from the Gender and Women's Studies Department at California State University, Northridge in October 2008.

Interviewer: Kimberlee Granholm

C. Progress Report on Goals

2. Continue progress on the NEH/Mazer project: Making Invisible Histories Visible



CSW and the NEH team has exceeded the second-year goals that we proposed in the grant. In the first six months of Year 2, we processed 122 linear feet of materials. In this second six months, from November 1, 2012 to April 30, 2013, we arranged, processed, and created finding aids for an additional 58.75 linear feet of materials. This includes the collections of Cheryl Kaplan, Angela Brinskele, Charline Abernathy, Betsy Calloway, Francesca Roccaforte, Sandy Dwyer, Barbara Grier, Diana Press, Tele Woman, Elizabeth Gould Davis, and Mildred Berryman. During the second year of the project we completed a total of 180.75 linear feet, surpassing our goal of 127.5 linear feet.



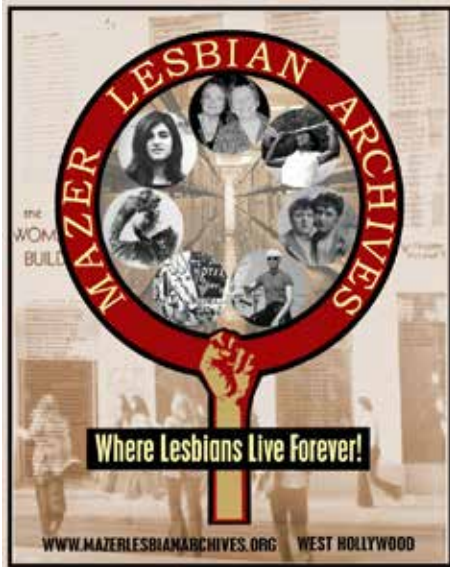
Of these newly processed collections, we have digitized the collections of Francesca Roccaforte, Elizabeth Gould Davis, Angela Brinskele, Barbara McDonald, and Ardella Tibby totaling 2200 scans. Combined with the 2412 scans from the first six months of the year, we scanned 4612 images from these collections, surpassing our goal of 1300 documents, following our new strategy of wholesale scanning for the smaller collections (1 linear foot or less) and curated scanning for the larger collections.

Our audiovisual digitizing continues to proceed on schedule. During the period of this report, 100 analog audiocassettes have been digitized covering 100 hours of material. We have begun transferring moving images from old formats by sending these to a specialized moving images preservation company. We completed 8 reels of home movies from the Cecilia Kukyendall collection, featuring her and her partner, Ardella Tibby, whose collection is also part of the Mazer collection.

Furthermore, finding aids for the first 27 collections are now available through the Online Archive of California. <http://www.oac.cdlib.org/>, greatly increasing access to the collections:



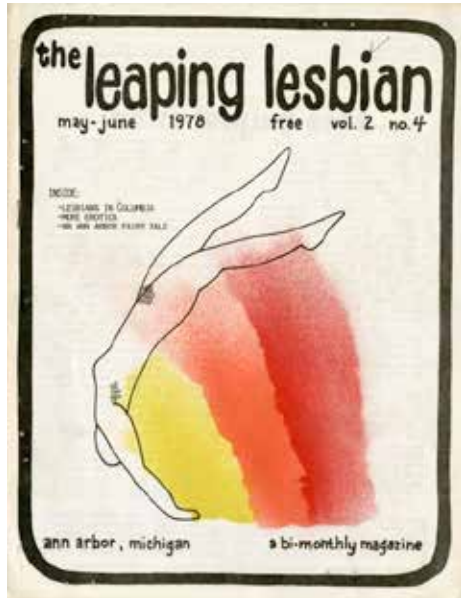
C. Progress Report on Goals



1. Woman's Building Records
2. Daughters of Bilitis Records
3. Terri de La Peña Papers
4. Diane Germain Papers
5. Marie Cartier Papers
6. Linda Garber Papers
7. Lesbian Nurses of Los Angeles Records
8. Elaine Mikels Papers
9. Bunny MacCulloch Papers
10. Jewish Feminist Conference Records
11. Lesbian Visibility Week Records
12. Kitty Tsui Papers
13. National Lesbian Feminist Organization Records
14. Tyger-Womon Papers
15. Lesbian Schoolworkers Records
16. Red Arobateau Papers
17. Lesbian Catholics Together Records
18. Joan Moore (Robbins) Papers
19. Ruth Reid & Kent Hyde Papers
20. Linda Farin Papers
21. Robin Ruth Linden Papers
22. Marion Zimmer Bradley Papers
23. Barbara Guest Papers
24. Judy Freespirit Papers
25. Margaret A. Porter Papers
26. Broomstick Magazine Records
27. Barbara Grier Periodical Collection

We are also publicizing the collections to the community, as well as research scholars around the world, and toward that end we have begun to feature Mazer collections in the CSW blog on a monthly basis in a series entitled, "From the Mazer Archive." Blog postings include: "Broomstick Magazine" (May 13, 2013) <http://uclacsw.blogspot.com/2013/05/records-of-broomstick-magazine.html>; "Elaine Mikels Papers" (April 11, 2013) <http://uclacsw.blogspot.com/2013/04/elaine-mikels-papers-1977-1984.html>; "Grier Periodical Collection and Diana

C. Progress Report on Goals



Press Records” (March 19, 2013) <http://uclacsw.blogspot.com/2013/03/grier-periodical-collection-and-diana.html>; “Lesbian School Workers Records” (February 19, 2013) <http://uclacsw.blogspot.com/2013/02/from-june-l-mazer-lesbian-archives.html>; Ruth Reid and Kent Hyde Collection (December 19, 2012) <http://uclacsw.blogspot.com/2012/12/from-june-l-mazer-lesbian-archives-ruth.html>.

In the second year of the project, we continued to refine our internal process. In early April, we hired an undergraduate work study student to focus exclusively on the digitization portion of processing. Jorge Lopez began in April and will continue to work on scanning through the summer of 2013. His work includes scanning paper documents and then attaching metadata to each so that they can be ingested into the UCLA digital archive. In the coming year we anticipate committing additional undergraduate student worker resources to digitization. Toward that end, we purchased an additional high resolution scanner to accommodate the work load. We also purchased the computer equipment necessary to digitally preserve the VHS tapes in the Audio Visual collection. The bulk of this work will occur during summer months.

Since we are ahead of schedule in the processing of the paper collections, we anticipate shifting our GSR time to the audiovisual collection in the third year of the grant. This will help to offset the fact that the audio visual collection is several times larger than our original estimate.

As we enter the third and final year of this grant, we are thinking about the future and beginning to plan how we will continue the partnership that we have built between CSW, the Charles E. Young Research Library, and the June L. Mazer Lesbian Archive. It is our intent to sustain this collaboration beyond the three years of the NEH grant period. To do this, we are researching additional funding streams and convening meetings of the key partners on the grant.

As we noted above, we have begun efforts to promote the Mazer collections through the CSW blog. We have begun the discussion of the ways that we might promote the collections and we will continue working out that plan.



C. Progress Report on Goals



Dr. Penny Kanner surrounded by the workshop participants: from left to right, Ally Field, Samantha Sheppard, Uri McMillan, Leisy Abrego, Guadalupe Escobar, and Freda Fair

3. Create and Implement a Faculty Manuscript Workshop for Junior Faculty in CSW's Mission Areas through the Dr. Penny Kanner Next Generation Fellowship

THIS PROGRAM supports the professional and scholarly development of UCLA junior faculty who are doing innovative scholarship in any discipline that focuses on CSW mission areas. It supports their research through mentorship across generations. The donor for this fund, Dr. Penny Kanner, values feminist scholarship that pushes beyond traditional historical frameworks to open up new areas and approaches to research. Junior faculty completing their first monographs compete for funding to bring in two senior scholars in their area to review and advise on the manuscript in a workshop setting. The junior scholar will also have funding for a UCLA graduate student assistant working in their area, who will attend the workshop and assist in its implementation. Through this process, the graduate student will be mentored in kind. We held three manuscript workshops this year for Professors Allyson Field, Uri McMillan, and Leisy Abrego. See Appendix 5 for the participants' comments on the value of these workshops.

C. Progress Report on Goals



*Samantha Noelle Sheppard and
Allyson Nadia Field*

Fall Workshop: Allyson Field

Held on November 1, 2012, the first workshop featured Allyson Field and her mentee, Samantha Sheppard. Outside readers were Professors Jackie Stewart, Northwestern; Greg Waller, Indiana U; and Anna Everett, UC Santa Barbara. UCLA Faculty participants include Professors John Caldwell, Cinema and Media Studies; Kathleen McHugh, Cinema and Media Studies; Richard Yarborough, English; Darnell Hunt, Sociology; Arne Lunde, Scandinavian Section; and Sarah Haley, Gender Studies.

ALLYSON NADIA FIELD is an Assistant Professor of Cinema and Media Studies and is a faculty affiliate of the Moving Image Archive Studies program and the Ralph J. Bunche Center for African American Studies at UCLA. Her primary research interest is in race and ethnicity in American film, including non-theatrical film production, independent cinema, and Hollywood. Her research interests also include feminist, avant-garde and experimental filmmaking, transatlantic modernisms and global silent-era cinemas. The manuscript CSW work-shopped is titled: “Filming Uplift and Projecting Possibility”; it considers African American uplift cinema of the 1910s and the film production of southern agricultural and industrial educational institutions. After the workshop, Field did substantial revisions before submitting the work to Duke University Press. She has just received a contract from them.

SAMANTHA NOELLE SHEPPARD, Field’s mentee, is a doctoral candidate in the Department of Cinema and Media Studies. Recipient of the Eugene V. Cota Robles Fellowship, her dissertation is titled “Sporting Bodies, Displaying History: Black Embodiment and Performance in Contemporary Sport and Hip Hop Dance Films.”

C. Progress Report on Goals



Freda Fair and Uri McMillan

Winter Workshop: Uri McMillan

On March 1, 2013, the CSW held the second Peggy Kanner Next Generation Manuscript Workshop, featuring Uri McMillan's "Embodied Avatars: The Art of Black Performance." The workshop was attended and moderated by outside readers, Professors Jennifer Brody, (Stanford) and Jackie Goldsby, Yale. Internal UCLA attendees were Professors Steven Nelson, Art History; Anurima Banerji, World Arts & Cultures; Rachel Lee, English/Gender Studies/CSW Interim Director; Richard Yarborough, English; Yogita Goya, English; Grace Hong, Gender Studies; Harryette Mullen, English; Arthur Little, English; Freda Fair, Gender Studies; with Helen Deutsch, English, not in attendance but sending

Uri written comments at a later date. McMillan's book manuscript was contracted to New York University Press for the Sexual Cultures series edited by José Muñoz and Ann Pellegrini.

URI MCMILLAN is an Assistant Professor in English at UCLA. His research interests include cultural studies, performance studies, visual culture and aesthetic theory, feminist theory, queer studies, African-American literature, and postcolonial literature and theory. His manuscript is a study of black female cultural actors who use modes of performance art as a strategic means through which to navigate aesthetic sites and spatial locations. Specifically, this book focuses on how these historical subjects all use the device of the alter ego, or avatar, in their performances. The performances occur in engravings, video art, photographs, slave narratives, abolitionist lecture stages, street performances, and newspapers.

FREDA FAIR, Uri McMillan's mentee, is a doctoral student in the Department of Gender Studies. Freda's work is focused on feminist and queer of color visual and textual cultural production, issues of labor and biopolitics, and the ways in which the contemporary manifestations of eugenics and biological racism shape queer-of-color communities primarily in the Midwest of the U.S.

C. Progress Report on Goals



Leisy Abrego and Gaudalupe Escobar

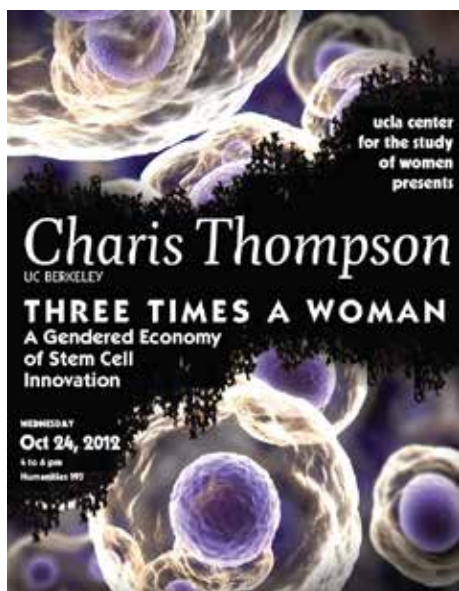
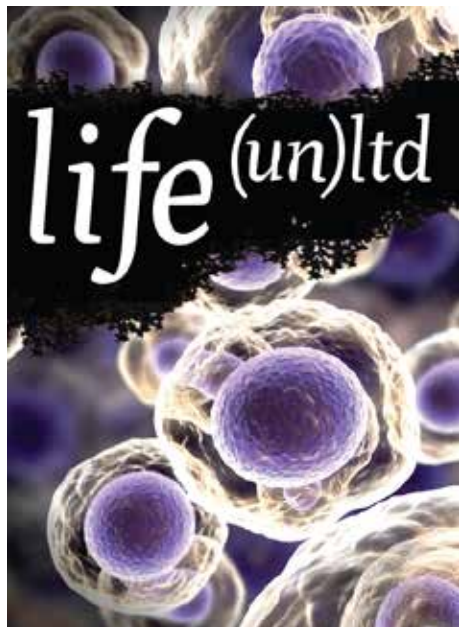
Spring Workshop: Leisy Abrego

Held on April 5, 2013, the spring workshop featured Leisy Abrego and her mentee, Lupe Escobar. External readers included Professors Nadia Kim, Associate Professor of Sociology, Loyola-Marymount University; Cecilia Menjivar, Cowden Distinguished Professor of Sociology at the T. Denny School of Social and Family Dynamics, Arizona State University; and Patricia Zavella, Professor of Latin American and Latino Studies, UC Santa Cruz. UCLA Faculty included Professors Kathryn Anderson-Levitt, Education and Information Studies; Maylei Blackwell, Chicana/o Studies and Gender Studies; Marjorie Faulstich-Orellana, Education and Information Studies; and Rubén Hernández-Leon, Sociology.

LEISY ABREGO is an Assistant Professor in the César E. Chávez Department of Chicana and Chicano Studies at UCLA. Trained as a sociologist, her expertise is in the area of families, gender, Central American migration, and Latino undocumented immigrants. She earned her Ph.D. in Sociology from UCLA in 2008 and is currently a Ford Foundation Post-doctoral Fellow. Her research investigates the opportunities for mobility and well-being of immigrants and their families in the home country. Currently in the process of writing her first book manuscript, Abrego highlights the role of gender and legal status in creating persistent inequalities among Salvadoran transnational families separated through migration. Her work also examines how immigration and educational policies shape the educational trajectories of undocumented students, as well as how gendered opportunities and expectations and immigration laws play out in the day to day lives of immigrants. She has also written award-winning articles about the social, educational, and political incorporation of undocumented youth in the U.S.

GUADALUPE ESCOBAR, Leisy Abrego's mentee, is a doctoral student in the Department of English. Her research interests include globalization and gender studies, decolonial feminisms, U.S. Latina/o literature, literature of Central America, true "stories," and scriptotherapy, third stage.

C. Progress Report on Goals



4. Expand the Life(Un)Ltd. Project

THIS RESEARCH COLLOQUIUM brings together scholars from public health, humanities, social sciences and life sciences to develop an interdisciplinary, feminist approach to developments in the biosciences that have effects on clinical practice, human rights, as well as philosophical and artistic practices. After a first year of bringing in speakers, the second year was focused on working groups and engaged discussion of faculty and visiting speaker's research on bio and reproductive technologies in relation to "expendable populations." Included were questions engaging how non-normatively gendered bodies, poor women's bodies, as well as gestational body parts have served as opportune sites and sources for medical experimentation. To explore these questions, LU pursued four avenues for enhancing feminist STS, race studies interdisciplinary inquiry at UCLA in AY 2012-13.

A. Seminars for LU members

The group discussed working papers on topics ranging from affect, amniocentesis and IVF, representations and research method regarding autism, the uterus outside the body/genetic engineering, and social constructivist/humanistic and bioscience approaches to sex and gender. See Appendix 3 for membership.

B. Public Lectures

Charis Thompson, UC Berkeley, spoke on "The Gendered Economy of Stem Cell Science." Elizabeth Wilson, Emory U, presented on "Bitter Melancholy: Feminism, Depression, and Aggression."

C. Symposium

CSW held "The Cultural Politics of Seeds," which was attended by over 100 people. Cosponsored by the School of Law, the Institute for Environment and Sustainability, Life Sciences, Social Sciences, Humanities Division, Institute of American Cultures, Chicano/a Studies Center, Institute of Society and Genetics as well as from the

C. Progress Report on Goals

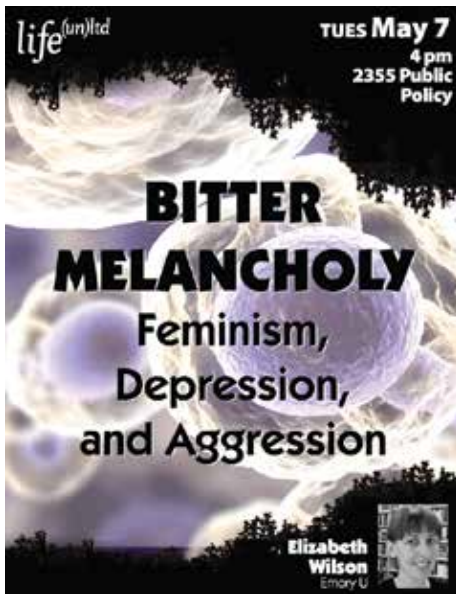


UC Humanities Research Center, the conference featured scholars, food activists, farmers, and artists. See Appendixes 1 and 2 for a more detailed description of the event.

“The Cultural Politics of Seeds” harmonized with the International Women’s Day Lecture/Global Ecologies keynote, on March 8, 2013. This talk, which was delivered by Vandana Shiva, a physicist, environmentalist, ecofeminist, and science policy advocate, was coorganized by CSW and Elizabeth DeLoughrey, an Associate Professor in the Department of English at UCA. Shiva’s address focused on issues related to farmers and corporate-modified seeds.

D. Special Issue

Soliciting, editing, and submitting essays (with multimedia illustrations) for a special issue of the peer-reviewed online journal, *The Scholar and The Feminist*, will be a major outcome of the LU symposium, which was held on May 11, 2012. The journal issue being prepared now and will be published in the Fall of 2013.



C. Progress Report on Goals

5. Continue Fundraising Initiative

This year, CSW raised \$22,000 in donor funding for the Dr. Penny Kan-ner Next Generation Fellowships and to fund the Thinking Gender coordinator for AY 2013-14. In the coming year, we will continue working on the strategic plan with Development begun in AY 11-12, focusing on donor relations; acquiring multiyear grants; Life (Un)Ltd and other research projects; and gaining grants for our community outreach.

Almost all of CSW's major projects include external support from donors or major federal grants, and all make significant contributions to research, scholarship, community outreach, and student learning.

C. Progress Report on Goals

6. Enhance Intellectual Networks, Climate, and Communities

CSW has achieved this ongoing goal—to build, maintain and/or enhance intellectual communities, networks, and climate—through longstanding programs devoted to two of our most important constituencies, community research scholars and graduate students, as well as through our publications networks and public events.



A. Research Scholars

The CSW Research Scholars (Appendix 6) are Los Angeles-based independent and/or public intellectuals publishing on topics pertaining to gender, sexuality, and women's issues. This program gives CSW a connection to the feminist intellectual community in Los Angeles and gives these scholars a connection to UCLA. Alice Wexler, a well-respected author of *Mapping Fate: A Memoir of Family, Risk, and Genetic Research* and *The Woman Who Walked Into the Sea: Huntington's the Making of a Genetic Disease*, recently shared her thoughts on the importance of the CSW research scholar program to her career:

C. Progress Report on Goals

Being a CSW Research Scholar has been critical to my identity as a feminist writer and scholar, enabling me not only to pursue research as a historian but also to have credibility and authority when presenting my work and interacting with people in the world of biomedicine and science.

Another long-time CSW Research Scholar, Gisele Maynard-Tucker, described the importance of the program to her activities as a consultant in international health:

I am extremely thankful for my affiliation with the UCLA Center for the Study of Women. As an international consultant and an applied anthropologist, I have been able to conduct research and evaluation of health programs in many regions of the world, focusing on women's health. Over the years, the CSW affiliation has helped me with library research resources, lectures and exchanges of ideas with colleagues, creating the right environment for the publications of my work and my ongoing research about women's health and sexual behavior in developing countries, while in turn publishing and sharing my findings with others.

For more comments from CSW Research Scholars, see Appendix 7.

CSW supports this important intellectual community with donor-based funding. The Tillie Olsen Research Grants honor the memory of a writer who documented the silences imposed on women by family and work responsibilities and financial need. These Research Scholar Grants provide funding to support exceptional research and projects by CSW Research Scholars. This year's award recipients have a diverse range of projects, from working with a fair-trade production company producing a documentary in Senegal to a study on how the suburban environment has influenced social and civic engagement in Los Angeles, which speak to many different areas of CSW's mission.

AYANO GINOZA received support for travel to Okinawa, Japan to conduct an oral history interview project as part of her book manuscript, entitled "Cultures of U.S. and Japanese Imperialism: Militarization, Tourism, and Indigeneity in Okinawa." Ginoza received her Ph.D. in American Studies from Washington State University in April of 2010. She served as a graduate instructor in American and Women's Studies at Washington

C. Progress Report on Goals

State University. Her project explores the complex intersections of tourism, militarism, and interdependencies of the U.S. and Japanese empires that have constructed Okinawan indigenous identity. Ginoza published an article in the CSW Update's special Research Scholar issue, titled "Okinawanness as a Form of Indigeneity in Transnational Anti-Militarist Feminist Movement."

REBEKAH PARK received support for travel to the annual American Anthropological Association meeting in San Francisco to present a paper on "Gender and Agency in Former Political Prisoners' Oral History Narratives in Postdictatorial Argentina." Park received her Ph.D. in Sociocultural Anthropology from UCLA in 2012. She also holds a M.A. in Applied Medical Anthropology from University of Amsterdam. Her research focuses on transitional justice, human rights, and gendered memories in post-conflict regions. Her book project, based on her dissertation, will focus on Argentina's history of human rights in relation to violence. Her current research project examines gendered memories among Argentine former political prisoners. Specifically, it compares the ways women and men describe their memories of themselves living through a repressive dictatorial regime, including the differing ways women and men recollect their roles in social movements, their interactions with one another in prison, and their lives post-release. With Sjaak van der Geest, Park edited the volume *Doing and Living Medical Anthropology: Personal Reflections* (2010). She is currently translating *Eslabones*, a volume of stories by Argentine political prisoners, from Spanish to English. She published an article in CSW Update's May 2013 titled "Former Political Prisoners in Argentina After the Dictatorship." Park had this to say about the support she receives from CSW:

With the Tillie Olsen Grant, I was able to attend the American Anthropological Association meeting for a panel I organized on the area of Transitional Justice for a paper on gendered memories. This panel enabled me to network with other key scholars in my field and provided me with a venue to receive critical feedback on my article manuscript. In addition, I was able to subsequently secure a book contract and am now in the final stages of my manuscript preparation. I am very grateful for the grant in offsetting the steep costs of attending the AAA conference, for keeping me connected to my field and being able to continue publishing. The CSW business cards helped too! I recently won a seat on an executive committee of the AAA, and I strongly believe that it would not have been possible without attending the conference and having the CSW affiliation.



C. Progress Report on Goals

CSWupdate
MARCH 2013

Natalie Hansen has been a CSW Research Scholar since 2011 and received a CSW Tillie Olsen Grant in 2012. Drawing on an interdisciplinary background, she examines representations of human-nonhuman relationships. Hansen also pursues a lifelong relationship with horses through her work as an equine craniosacral therapist.



BEYOND THE HORSE-CRAZY GIRL

**LEARNING TO LIVE
ACROSS SPECIES**

BY NATALIE O. HANSEN



NATALIE CORINNE HANSEN received support for travel to conduct preliminary fieldwork at Lowell Correctional Institute in Ocala, Florida for her project, entitled “Healing with Horses.” Hansen completed her Ph.D. in Literature and Feminist Studies at the University of California, Santa Cruz, in 2009. Drawing on her interdisciplinary background in literature, gender studies, and science, her research and writing examines representations of human-nonhuman relationships in imaginative fiction, popular media, ethologies, and training narratives. Her explorations of the intersections between species, gender, and race have been published in *Women’s Studies Quarterly*, *JAC*, *Michigan Feminist Studies*, and *The Brock Review*, as well as in two anthologies: *Beyond Human* and *Speaking for Animals*. In addition to continuing scholarly

research and writing, Hansen teaches courses in literature and composition at Santa Monica College and pursues her life-long relationship with horses through her work as an equine craniosacral therapist. Hansen published an article in *CSW Update*’s March 2013 issue, titled “Beyond the Horse-Crazy Girl.”

C. Progress Report on Goals



CSW Awards Luncheon 2013

B. The CSW Graduate Student Initiative

In its twenty-nine years as an organized research unit at UCLA, CSW has advanced academic excellence in the study of gender, sexuality, and women's issues by developing and fostering, among other things, innovative graduate student research through funding, programming, and employment opportunities. CSW has long supported and advanced the research and professional careers of graduate students at UCLA. In recent years, we have dramatically extended and formalized this support through targeted fundraising, innovations in programming, and the creation of new scholarly and professional training opportunities. CSW takes very seriously our role as mentor to the many graduate students from various departments and disciplines who do research in the areas of gender, sexuality, and women's issues. The Graduate Student Initiative is our public commitment to promoting the professional success and academic excellence of graduate students at UCLA.

FELLOWSHIPS, GRANTS AND AWARDS

CSW is dedicated to advancing graduate-level research at UCLA in the areas of gender, sexuality, and women's issues. Our generous donors have provided CSW with the means to offer graduate students an array of award, grant, and fellowship opportunities. CSW provides awards for dissertation and scholarly excellence, fellowships for research, and a competitive biannual travel grant program. As one recipient, Lisa Sloan, noted at the 2013

C. Progress Report on Goals



Virginia Coiner Classick with the recipients of the Constance Coiner Awards for 2013

awards luncheon, “the Center for the Study of Women has been important to my intellectual and professional development here at UCLA. CSW has sponsored numerous conferences and events that have shaped my thinking. Thinking Gender was the first academic conference that I presented at. It is very exciting to be recognized by an organization that I so admire.”

CSW’s graduate student awards and grants are highly competitive and we solicit faculty to serve on these committees to maintain the integrity of the process. Faculty find this service work to be rewarding and frequently accept our offers to attend the annual Awards Luncheon in June to meet the recipients of the awards they judged (Appendix 8).

These awards are also part of the intellectual community and dynamic environment that CSW provides in supporting research in our mission areas. Many of the recipients this year pointed

C. Progress Report on Goals



Lisa Sloan with Penny and Ed Kanner

to the importance of CSW's Thinking Gender conference in their academic career. Anne E. Fehrenbacher, recipient of the Elizabeth Blackwell, MD, Award, said,

This is a huge honor and I first want to thank the Center for the Study of Women for making this award possible and Dr. Kanner for endowing the award. And I also want to give a special thanks to Professor Lara Stemple in the School of Law who was moderator at Thinking

Gender where I presented some of this work. She advised me in writing this paper and has given me edits over the last year.

Again, Maya Smukler, recipient of the Jean Stone Dissertation Research Fellowship, called attention to the role that CSW plays in the academic life of these students:

It's such an honor to be here with all of you and to receive this award. The Center for the Study of Women has been such a major part of my life as a graduate student. I presented a paper that was just the beginning of what turned out to be my dissertation as a master's student about a hundred years ago at the Thinking Gender conference; so, it's really exciting to be here today and receive this award for these funds that are going to help me actually finish that idea as a dissertation in the next year.

Finally, Stephanie D. Santos, recipient of an Irving and Jean Stone Dissertation Year Fellowship, echoed the sentiments of her fellow awardees:

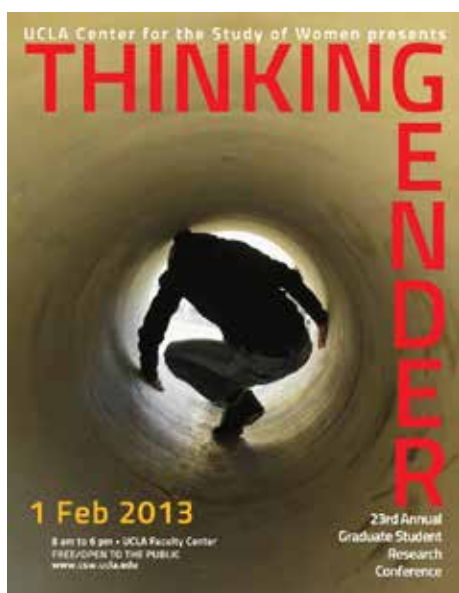
When I started at UCLA, I actually wasn't a grad student: I was working. One of the great perks of working at this university is you get to attend all these exciting talks and events and conferences, and it seemed like my favorite talks and conferences that I attended were always either sponsored, organized, cosponsored, or in some way connected with the Center for the Study of Women, and so the CSW has been an inspiration for me to go

C. Progress Report on Goals



back to grad school, and it's always been a very important part of my life here at UCLA.

The newest award developed by CSW to support innovative policy recommendations by graduate students and to provide additional mentorship opportunities for graduate students on campus is the Policy Brief Award. The award recipients are given the opportunity to work with CSW's Managing Editor of Publications to fine tune their briefs into professional documents ready for dissemination. These briefs are then published as PDFs on the CSW website, on the California Digital Library and in a printed digest that is widely distributed to organizations and policymakers with an interest in the topic. Though the award was only introduced in 2010-2011, the awards are quickly becoming prestigious and highly visible on campus. Altogether, the CSW fellowship, grant and award opportunities housed within our Graduate Student Initiative provided funds to 24 students in this academic year, ranging from \$200 to \$34,000. For a full list of awards, recipients, and descriptions of their projects, see Appendix 9 and 10.



THINKING GENDER

CSW's 22nd annual graduate student research conference, Thinking Gender provided 82 graduate students with an opportunity to present their work to a diverse and interdisciplinary audience and receive detailed remarks from engaged moderators. Thinking Gender is a cornerstone of CSW's Graduate Student Initiative, in that it provides graduate students doing important and innovative work in the areas of gender, sexuality, and women's issues an opportunity to present this work in a highly professional, academically rigorous environment and receive constructive criticism from engaged moderators to enhance their research and presentation skills. Over 250 participants attended the conference this year to learn more about new directions and innovative research from a diverse group of young scholars in the areas of women, gender, and sexuality. See Appendix 11.

Presenters at this year's conference came not only from UCLA, but from all over the U.S. and the world, including New Jersey, Cambridge, Ohio, and New York, England, Austria, and Norway. This year, CSW received much feedback from both Thinking Gender presenters as well as conference attendees. One presenter said that the most positive aspect of participating in Thinking Gender was "the welcoming and positive community of students and faculty. It's great to get critical feedback but also enthusiasm about your

C. Progress Report on Goals

research.” Another commented, “My interaction with the moderator was amazing. Her suggestions were very helpful.” The stipend provided to the Conference Coordinator Rana Sharif was funded by the Graduate Division and provided her with valuable skills in submission management and selection, scholarly communication, conference logistics, and general organization.

The Thinking Gender conference, seeks first to provide graduate students an opportunity to present their work in a professional and demanding academic environment with the intent to help them develop their professional skills. The second goal of the conference is to attract an audience of faculty, students, and the wider scholarly community with innovative and forward thinking research to foster the kind of academically rigorous environment that has proven invaluable to the graduate student presenters. Participant comments suggested that this year’s conference achieved these goals. One conference attendee said of the conference as a whole, “Networking with other students and faculty was great. My panel was amazing. The organizers were stellar. It was a great conference.” Another attendee said, “The speakers on my panel presented something I did not expect. It expanded my way of thinking and was very engaging.”

Further evidence of CSW’s successful efforts to highlight innovative and interesting research at the Thinking Gender conference is the sustained interest in the research by the wider scholarly community well after the day of the conference. Downloads of the Thinking Gender graduate student papers from eScholarship Repository of the California Digital Library (CDL) continue to be very popular: 21,131 requests in this academic year and more than over 80,000 since the papers have been available on the CDL (see Appendix 12).

DISSERTATION WRITING RETREAT/WRITING GROUPS

Graduate students who do research on gender, sexuality, and women’s issues can be located in many different departments and schools across the campus and may feel isolated. In an effort to bring like-minded scholars together and promote productivity, CSW organizes an annual dissertation writing retreat and ongoing writing groups. In addition, we have chat listservs so that participants in the groups can communicate with each other throughout the year. Bringing students from different disciplines together creates a supportive environment where students can

C. Progress Report on Goals

share ideas and come to see their dissertation topics from productive new angles. In addition, the retreat gives participants a rare opportunity to concentrate on writing, uninterrupted, for three days. CSW provides meals and snacks so that writers don't have to think about anything other than their work. The results are, by all accounts, enormously effective.

This year, the annual weekend-long dissertation writing retreat took place from June 21st to 23rd. As usual, it was all but overflowing with enthusiastic participants (unfortunately, some applicants had to be put on a waitlist because of space constraints). The retreat was open to any ABD students at UCLA. Home departments of the participants included Art History, Geography, Applied Linguistics, Economics, Anthropology, Italian, Comparative Literature, Political Science, Cinema and Media Studies, English, Gender Studies, Information Studies, Musicology, Sociology, World Arts and Cultures/Dance, Theater and Performance Studies, and Visual Studies. With more than twenty participants, including recipients of the CSW Irving and Jean Stone Dissertation Year Fellowships, CSW arranged for a second room so that all the writers would have sufficient space. At the end of the retreat, participants discussed ways that CSW can provide additional support and help them achieve success in this crucial year. This year, several participants wanted to create writing groups, and CSW has provided space and organizational support for these ongoing groups.

The feedback from the dissertation writing retreat is always extremely positive, and this year was no exception. In letters sent to CSW, attendees marveled at the amount of work they accomplished during the three-day writing group and expressed gratitude for the opportunity to work in "an environment of supported communal working" with few distractions. All reported substantial progress, and several stated that it would have taken them multiple weeks to accomplish all that they did during the three-day retreat. See Appendix 13.

C. Progress Report on Goals

EMPLOYMENT OPPORTUNITIES AND SPECIALIZED TRAINING

Students employed as Graduate Student Researchers (GSRs) at CSW gain valuable experience and training by working on CSW projects and programs. CSW provides students with training on how to conduct secondary research, conduct oral history, write grants and briefs, develop websites, conduct basic and specialized research, make oral presentations, use subject-specific databases, and succeed in a scholarly workplace. The Director, Associate Director, and Assistant Director provide extensive group and individual research-related training sessions. In the Publications unit, the Managing Editor provides ongoing opportunities for graduate student assistants to gain expertise in publishing and to develop skills in designing user-appropriate websites and databases. Additionally, CSW coordinates training and on-going workshops with librarians and archivists to instruct graduate student researchers working on the NEH/Mazer project about archival processing, preservation, digitization, and creation of finding aids.

C. Progress Report on Goals

C. Newsletter



AVAILABLE FOR DOWNLOAD on the website as well as the California Digital Library, our highly regarded newsletter, *CSW Update*, continues to garner much attention on campus and online. On the California Digital Library alone, articles from our newsletter have been viewed or downloaded more than 50,000 times, and the last academic year saw 10,618 views (Appendix 12). The nine regular issues included reviews of events, research articles by award recipients, and interviews with faculty development grant recipients and visiting speakers. In addition, each month had an update on the progress of the June L. Mazer Lesbian Archives, including information behind collections that were recently processed and digitized. See Appendix 14 for the contents of each issue.

C. Progress Report on Goals



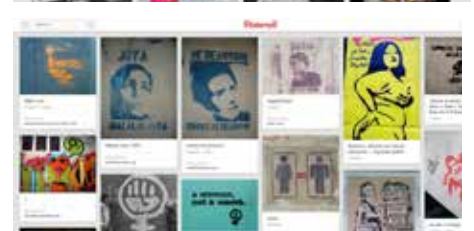
This year's issues featured articles by and about faculty and students from these departments and schools:

- Art History
- Chicano/a Studies
- Cinema and Media Studies
- Community Health Sciences
- English
- Fielding School of Public Health
- Gender Studies
- Graduate School of Education and Information Studies
- History
- Labor and Workplace Studies
- Life Sciences
- Luskin School of Public Affairs
- Sociology
- Theater, Film, and Television
- Urban Planning
- World Arts and Cultures/Dance

CSW also published two special issues this year: *Making Invisible Histories Visible: Preserving the Legacy of Lesbian Feminist Activism and Writing in Los Angeles* and *Thinking Gender: 23rd Annual Graduate Research Conference*. The former was based on the ongoing NEH-funded project at the June L. Mazer Lesbian Archives and included a full set of articles regarding recent materials processed and an interview with the president of the Archives' board. The Thinking Gender special issue gave an overview of the conference, published one of the plenary presentations, and featured panel summaries.

C. Progress Report on Goals

D. Website and Social Networking



CSW'S PROFESSIONAL COMMUNICATIONS INFRASTRUCTURE and outlets reach the broader scholarly community in our mission areas efficiently and effectively. Since the conversion of our website from an HTML-only editable format to a content management system in 2011, we have been able to update and add content more efficiently and quickly. Consequently, the CSW website now provides a number of important functions. All of our awards and grants applicants can now submit their required documents online, thus streamlining the submissions process. The website is also CSW's main point of communication to the broader scholarly community in our mission areas. From the website, users can subscribe to our listserv; view

C. Progress Report on Goals

The CSW blog has already gained an international audience with readers from Great Britain, India, France, Sweden, Mongolia, Tanzania, Rwanda, and Germany, as well as the U.S.

upcoming and past events; view news items; access the blog, YouTube playlists, Twitter, Facebook, Pinterest, and CDL sites; request cosponsorship for events; discover funding and other support opportunities; and read newsletter articles and access information about ongoing research projects. At base, the ease of use of our website has continually increased its functionality for our community and our staff.

In the past academic year, CSW made a concerted effort to expand our online presence and scholarly network. By implementing various web 2.0 initiatives, such as blogging and additional social networking, CSW has diversified and increased the venues through which we disseminate information on research, publications, and events related to our affiliated faculty, research scholars, award recipients, and our campus partners. These networks for communication allow us to expand and deepen scholarly relationships with and beyond the academic community. Through these initiatives, we have created an international audience for CSW-sponsored research, newsletters, and events.

VIDEOCASTS: CSW continues to record and upload videos of talks and presentations for archival use as well as for public view. Accessible through a new CSW Playlist on UCLA's YouTube channel, CSW videos have accumulated nearly 65,000 views (Appendix 15). This year, we uploaded videos from such events as the Cultural Politics of Seeds symposium, a Life (Un) Ltd talk by Charis Thompson, and an International Women's Day lecture by Vandana Shiva, a renowned ecofeminist.

BLOG: In December of 2011, CSW launched an official CSW blog. Since its launch, CSW has published 65 posts by faculty, staff, research scholars, and students (Appendix 16). Topics have included new faculty member Renee Tajima-Peña, a summary of "L.A. Food Culture and California Farm Work" exhibit, a review of Strangers in a Strange Land: Art, Aesthetics, and Displacement symposium, and a regular feature on materials and collections from the NEH/Mazer project. The CSW blog has garnered more than 8,500 pageviews (Appendix 17). It has also gained an international audience with readers from the United Kingdom, India, France, Poland, China, Mongolia, Sweden, South Korea, Tanzania, Rwanda, and Germany.

C. Progress Report on Goals

FACEBOOK, TWITTER, AND PINTEREST: In addition to maintaining and updating existing Facebook pages and Twitter feed, CSW added some new boards on Pinterest. These social networking activities have allowed CSW to expand our network of scholars; thereby disseminating our research, newsletters, events, and other CSW related activities to a wider international audience. Currently, CSW has 775 likes on Facebook, 163 followers on Twitter, and 104 followers on Pinterest (Appendix 17). Using these social networking tools CSW allows us to promote publications by CSW Research Scholars and Affiliated Faculty, CSW events, CSW newsletters, and the NEH/Mazer project.

C. Progress Report on Goals



E. Cultural Politics of Seeds

The Cultural Politics of Seeds symposium, which took place May 16 and 17, gathered scholars from the humanities, social sciences, and biophysical sciences as well as visual artists and small-scale farmers. The aims were to present current work and generate opportunities for collaboration. The symposium explored themes of scale, resistance, sovereignty, and community with respect to food culture and farming systems in particular contexts around the world. Presentations addressed the following topics: temporalities of rice cultivation in Southeast Asia (ancient, industrial, transgenic); farmer suicides in India; first foods and indigenous sovereignty in the Americas; 18th-century botany and botanical poetry in England as a historical lens for contemporary practices related to pollination; heirloom wheat breeding, non-patented seeds and public science in the Pacific Northwest; stories of small-scale farming and anti-globalization resistance in Mexico; seed saving and seed banks; and farmer as compared to scientist knowledge / ways of knowing with respect to seed diversity.

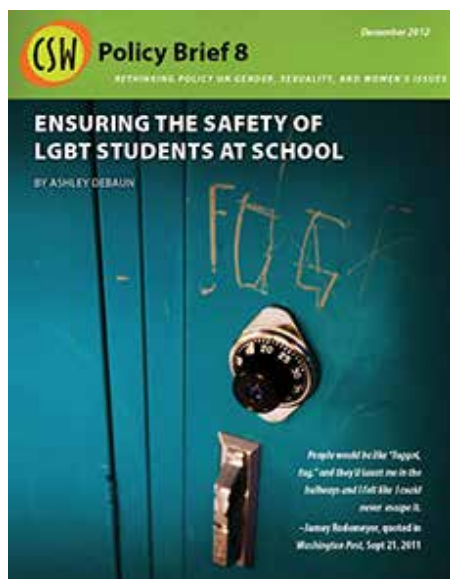
The symposium began with an invitational half-day session during which external speakers as well as UCLA faculty and students participated in a seminar about the merits and limitations of seed diversity as an organizing framework food food sustainability. The public symposium (May 17) drew over 100 attendees, an audience that included core faculty and students from the Center for the Study of Women (CSW) along with new communities for CSW, including environmental science and environmental humanities faculty as well as urban farmers, master gardeners, and food policy activists from community.

OUTCOMES: The symposium has contributed to the CSW's focus on sustainability and food security (a topic on which CSW produced a policy brief in 2010-2011). In addition, the event developed further and along innovative lines the ongoing Life (Un)Ltd project by connecting agriculture to the reproductive technologies and ideologies of the biotech industry. Through the particular presentations of Rebecca Tsosie, Allison Carruth, and Anne-Lise François, the symposium made humanistic emphases on narrative, storytelling, and aesthetics integral to research on seed genetics, botany, and food politics and to the issues of gender that underlie contemporary conflicts and movements around seeds.

C. Progress Report on Goals

In terms of outcomes, the symposium generated several concrete plans for future collaboration and publication. Stephen Jones (a plant breeder at Washington State University) and Allison Carruth will organize a sequel to the symposium in 2015 at the WSU, Pullman agriculture experiment station, where Jones runs a renowned heritage wheat breeding program as well as a first-of-its-kind Bread Lab. In preparation for that planned event, Carruth will form a working group to develop a digital compendium of stories, art projects, labs, farming communities (rural and urban), and activist coalitions around heirloom / landrace seeds, on the one hand, and hybrid and transgenic seeds, on the other. Finally, Carruth will follow up with speakers regarding a print publication of the symposium's proceedings (venue to be determined); the symposium has also sparked the interest of NYU press (specifically their series editor on Food). See Appendixes 1 and 2.

F. Policy Briefs



WITH THE SUPPORT OF AN ANONYMOUS DONOR, CSW developed the Policy Brief Award, which recognizes and disseminates outstanding applied feminist scholarship by graduate students in the area of public policy. Last year, eight graduate students researched and wrote policy briefs in the area of “LGBT Youth At Risk: Education, Health and Safety in Local, State, or National Context.” The resulting publication was distributed widely in the December of 2012 to nearly two hundred local and national organizations and elected officials (see Appendix 18), and made available on CSW’s website and the California Digital Library (CDL). CSW has received positive feedback on the briefs. A representative from the UIC Gender and Sexuality Center replied, “Thank you for sharing these resources with me. I look forward to reading them closely and integrating them into our Safe Zone trainings conducted on our campus and around the region. I am appreciative of the time and attention you have taken to get these to us.” A representative from the Youth Suicide Prevention Coordinator also replied to us, saying “Thank you for sending me the printed digest of the new set of policy briefs on the education, health and safety of LGBT youth. I administer a youth suicide prevention listserv in the Pacific Northwest and am forwarding the message I sent to them to let them know about the series. There are

C. Progress Report on Goals



over 200 people on the list, including prevention coordinators, educators, researchers, physical and mental health practitioners, advocates, and others. I appreciate the briefs and policy recommendations.”

For the third set of Policy Briefs, CSW partnered with Julie Elginer, a Lecturer in the UCLA Center for Health Policy Research, and chose “Women’s Reproductive Health Policy in California” as the theme. Five briefs will be published:

- *Not a Third World Problem*, by Laura Carter, a graduate student in the Department of Community Health Sciences at the Fielding School of Public Health
- *Improving Maternal Depression Screening & Treatment for Women Enrolled in Medicaid*, by Echo Zen, a graduate student in the Fielding School of Public Health
- *Enhancing Access to Prenatal Care within the California Health Exchange*, by Jennifer Frehn, a graduate student in the Department of Community Health Sciences at the Fielding School of Public Health
- *Achieving Universal Access to Contraceptives under Covered California*, by Karen Lai, a graduate student in the Department of Health Policy and Management at the Fielding School of Public Health
- *The California Health Exchange and Preventive Dental Services: An Essential Health Benefit Under Maternal and Newborn Care*, by Katsume Stoneham, a graduate student in the Department of Community Health Sciences at the Fielding School of Public Health

Each brief will be available as a PDF on the CSW website and on the CDL. In addition, a printed digest of the briefs will be distributed widely to local and national organizations whose work relates to the topic. Judging from the feedback from last year’s briefs and the quality of this year’s briefs, CSW Policy Briefs are becoming widely known for their significant recommendations on public policy issues.

D. Research, Teaching, and Programming

1. Core and Affiliated Faculty

CSW Director Kathleen McHugh holds a 33% appointment and the Associate Director holds a 20% appointment. In addition, CSW is guided by an Advisory Committee. Affiliated Faculty hail from all colleges and professional schools in the university.

Advisory Committee



Susan Leigh Foster
Chair, CSWAC
Professor, World Arts & Cultures



Alicia Gaspar de Alba
Chair, Chicano/a Studies
Professor, Chicano/a Studies
Women's Studies and English



Rachel Lee
Associate Professor, English and
Gender Studies



Kathleen McHugh
CSW Director; Professor, English
and Cinema and Media Studies



Abigail C. Saguy
Assistant Professor, Sociology



Sharon Traweek
Associate Professor, History



Carole Browner
Professor in Residence, Psychiatry
and Biobehavioral Science



Ellen DuBois
Professor, History



Arthur Little
Associate Professor, English



Anne Mellor
Professor, English



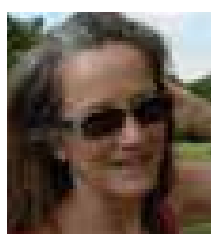
Jenny Sharpe
Professor, English, and Chair,
Gender Studies



Belinda Tucker
Professor, Psychiatry and
Behavioral Science; Assoc. Dean,
Grad Division



Sue-Ellen Case
Professor and Chair,
Theater Critical Studies



Elisabeth Le Guin
Associate Professor, Musicology



Muriel McClendon
Associate Professor, History and
European Studies



Felicity Nussbaum
Professor, English



Shu-mei Shih
Professor, Comparative Literature,
and Asian American Studies



Juliet Williams
Associate Professor,
Gender Studies



Kirstie McClure
Associate Professor, Political
Science



Vilma Ortiz
Associate Professor, Sociology



Lara Stemple
Director of Graduate Studies
Program, Law

D. Research, Teaching, and Programming

Faculty Affiliates

Emily Abel

Professor Emerita,
Public Health

Carol Aneshensel

Professor, Public Health and Community
Health Science

Helen Astin

Professor Emerita, Education

Eric Avila

Associate Professor, Chicano Studies
and History

Anurima Banerji

Assistant Professor, World Arts and
Cultures

Victor Bascara

Associate Professor, Asian American
Studies

Janet Bergstrom

Professor, Cinema and Media Studies

Kathryn Bernhardt

Professor, History

Maylei Blackwell

Assistant Professor, Chicana/o Studies

Ruth Bloch

Professor and Vice Chair, History and
Academic Personnel

Evelyn Boria-Rivera

Post-Doc and Lecturer, English

Jennie E. Brand

Assistant Professor, Sociology

Joseph Bristow

Professor, English

Karen Brodtkin

Professor Emerita, Anthropology

Carole Browner

Professor in Residence, Psychiatry and
Biobehavioral Science

Lia Brozgal

Assistant Professor, French and
Francophone Studies

Greg Bryant

Assistant Professor, Communication
Studies

Taimie Bryant

Professor, Law

Lucy Burns

Assistant Professor, Asian American
Studies

Allison Carruth

Assistant Professor, English

Sue-Ellen Case

Professor and Chair, Theater Critical
Studies

Jessica Cattellino

Associate Professor, Anthropology

King-Kok Cheung

Professor, English

Susan Cochran

Professor, Epidemiology

Kimberle Crenshaw

Professor, Law

Lisa Kim Davis

Assistant Professor, Geography

Esha Niyogi De

Lecturer, Writing Programs

Elizabeth DeLoughrey

Associate Professor, English

Robin L.H. Derby

Assistant Professor, History

Helen Deutsch

Professor, English

Ellen DuBois

Professor, History

Christine Dunkel Schetter

Professor, Psychology

Jo-Ann Eastwood

Assistant Professor, School of Nursing

Nina Sun Eidsheim

Assistant Professor, Musicology

Thelma Estrin

Professor Emerita, Computer Science

Lieba Faier

Assistant Professor, Geography

Allyson Nadia Field

Assistant Professor, Cinema and Media
Studies

Aisha Finch

Afro American Studies and Women's
Studies

Chandra Ford

Assistant Professor, Community Health
Services

Susan Leigh Foster

Professor, World Arts and Cultures

Lorrie Frasure

Assistant Professor, Political Science

Jodi Friedman

Associate Clinical Professor, Medicine

Nouri Gana

Assistant Professor, Comp Literature &
Near Eastern Languages and Cultures

Alicia Gaspar de Alba

Professor and Chair, Chicana/o Studies

David Gere

Co-Chair and Associate Professor, World
Arts & Cultures

Jessica Gipson

Assistant Professor, Community Health
Services

Paola Giuliano

Assistant Professor, Anderson School of
Management

Phillip Atiba Goff

Assistant Professor, Psychology

Andrea S. Goldman

Assistant Professor, History

Yogita Goyal

Assistant Professor, English

Patricia Greenfield

Professor, Psychology

Lourdes Guerrero

GME Analyst, David Geffen School of
Medicine

Sondra Hale

Professor Emerita, Anthropology and
Women's Studies

Sandra Harding

Professor, Social Sciences and
Comparative Education

Cheryl Harris

Professor, Law

Martie G. Haselton

Associate Professor, Communication
Studies/Psychology

Katherine Hayles

Distinguished Professor Emerita, English

Kelly Lytle Hernandez

Associate Professor, History

Andrew Hewitt

Professor and Chair, Germanic
Languages

Frank Tobias Higbie

Associate Professor, History

Gil Hochberg

Associate Professor, Comparative
Literature

Grace Hong

Associate Professor, Asian American
Studies

Louise Hornby

Assistant Professor, English

Carollee Howes

Professor, Education

Yu Huang

Assistant Professor, Materials Science &
Engineering

Lynn Hunt

Professor, Weber Chair, History and French
and Francophone Studies

Margaret Jacob

Professor, History

Robert Jensen

Associate Professor,
Public Policy

Kerri L. Johnson

Assistant Professor, Communication
Studies

Sarah Kareem

Assistant Professor, English

Benjamin R. Karney

Associate Professor, Psychology

Andrea Kasko

Assistant Professor, Bioengineering/
Biomedical Engineering

Cheryl Keyes

Associate Professor, Ethnomusicology

Katherine King

Professor, Classics and Comparative
Literature

Gail Kligman

Professor, Sociology

Hannah Landecker

Associate Professor, Sociology

Anna Lau

Associate Professor, Psychology

Sylvia Lavin

Professor, Architecture and Urban Design

Elisabeth Le Guin

Associate Professor, Musicology

Jacqueline Leavitt

Professor, Urban Planning

Gia Lee

Acting Professor, Law

Rachel Lee

Associate Professor, English/Gender
Studies

D. Research, Teaching, and Programming

Faculty Affiliates

Françoise Lionnet

Professor, French and Francophone Studies

Arthur Little

Associate Professor, English

Christine Littleton,

Vice Provost, Office for Faculty Diversity; Professor, Law

Susanne Lohmann

Professor, Political Science

Marissa Lopez

Assistant Professor, English

Neil Malamuth

Professor, Communication Studies and Psychology

Purnima Mankekar

Associate Professor, Women's Studies/Asian American Studies

Elizabeth Marchant

Associate Professor, Spanish and Portuguese

Victoria Marks

Professor, World Arts & Cultures

Saloni Mathur

Associate Professor, Art History

Valerie Matsumoto

Associate Professor, History

Vickie Mays

Professor, Psychology and Health Services; Director, Center on Research, Education, Training and Strategic Communication on Minority Health Disparities

Susan McClary

Professor Emerita, Music

Muriel McClendon

Associate Professor, History; Chair, European Studies Interdepartmental Program

Kirstie McClure

Associate Professor, Political Science

Kathryn McDonnell

Assistant Professor, Classics

Patricia McDonough

Professor and Vice Chair, Education

Claire McEachern

Professor, English

Kathleen McHugh

Professor, English and Cinema & Media Studies; Director, CSW

Anne Mellor

Professor, English

Sara Melzer

Associate Professor, French and Francophone Studies

Sean Metzger

Assistant Professor, Performance Studies

Claudia Mitchell-Kernan

Professor, Anthropology

Mignon R. Moore

Assistant Professor, Sociology

Mitchell Morris

Associate Professor, Musicology

Amir Mufti

Associate Professor, Comparative Literature

Edith Mukudi Omwami

Asst Professor, Social Sciences and Comparative Education

Harryette Mullen

Professor, English

Laure Murat

Assistant Professor, French and Francophone Studies

Barbara Nelson

Dean and Professor, Public Policy

Sianne Ngai

Associate Professor, English

Kathryn Norberg

Associate Professor, History

Chon Noriega

Prof., Film and Television; Director, Chicano Studies Research Center

Felicity Nussbaum

Professor, English

Frances Olsen

Professor, Law

Catherine Opie

Professor, Art

Vilma Ortiz

Associate Professor, Sociology

Sherry Ortner

Professor, Anthropology

Sule Ozler

Associate Professor, Economics

Carole Pateman

Professor, Political Science

Carol Pavlish

Assistant Professor, Nursing

Letitia Anne Peplau

Professor, Psychology

Maria Cristina Pons

Associate Professor, Chicana/o Studies

Lucia Re

Professor, Italian

Janice Reiff

Associate Professor, History

Ted Robles

Assistant Professor, Health Psychology/Sociology

Karen Rowe

Professor, English

Abigail C. Saguy

Assistant Professor, Sociology

Linda J. Sax

Professor, Higher Education and Organizational Change

Brooke Scelza

Assistant Professor, Anthropology

James Schultz

Professor, Germanic Languages

Jenessa Shapiro

Assistant Professor, Psychology

Aparna Sharma

Assistant Professor, World Arts and Cultures

Jenny Sharpe

Professor, English

Seana Shiffrin

Associate Professor, Philosophy

Margaret Shih

Associate Professor, Anderson School of Management

Shu-Mei Shih

Professor, Asian Languages and Cultures

Barbara Sinclair

Professor Emerita, Political Science

Susan Slyomovics

Professor, Anthropology

Monica L. Smith

Professor, Anthropology

Vivian Sobchack

Professor Emerita, Film and Television

Zrinka Stahuljak

Assistant Professor, French and Francophone Studies

Jennifer Steinkamp

Professor, Design | Media Arts

Lara Stemple

Director of the Graduate Studies Program, Law

Brenda Stevenson

Professor, History; Chair, Interdepartmental Program in Afro-American Studies

Caroline Streever

Assistant Professor, English

Saskia Subramanian

Asst Research Sociologist, Psychiatry, Biobehavioral Science

Mariko Tamanoi

Associate Professor, Anthropology

Paula Tavrow

Adjunct Assistant Professor, Public Health

Shelley Taylor

Professor, Psychology; Director, Social Neuroscience Lab

Kevin Terraciano

Professor, History

Mary Terrall

Associate Professor, History

Katrina Daly Thompson

Assistant Professor, Applied Linguistics

Chris Tilly

Professor, Urban Planning; Director, Institute, Labor and Employment

Cristina Tirado

Adjunct Associate Professor, School of Public Health

Fatimah Tobing Rony

Associate Professor, Film & Media Studies, University of California, Irvine

Sharon Traweek

Associate Professor, History

Belinda Tucker

Professor, Psychiatry and Behavioral Science; Associate Dean, Graduate Division

Dawn Upchurch

Professor, Public Health

Charlene Villaseñor Black

Associate Professor, Art History

Juliet Williams

Associate Professor, Women's Studies

Gail Wyatt

Professor in Residence, Psychiatry and Biobehavioral Science

Mary Yeager

Professor, History

Noah Zatz

Professor, Law

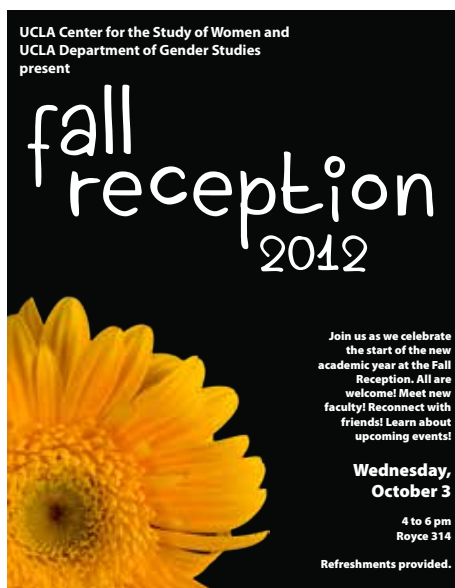
D. Research, Teaching, and Programming

3. Scholarly and Instructional Activities

This year we maintained our reputation for producing high-quality lectures, conferences, and workshops. In addition to the annual Thinking Gender conference and the symposium on the Cultural Politics of Seeds, CSW sponsored and cosponsored numerous events throughout the year. See Appendix 19 for all the events and attendance figures.

Programming

Each quarter during the academic year, CSW organizes events that highlight and support innovative research in our mission areas. By making sure that our events reflect the research interests of many faculty and students at UCLA, we can feature important research and promote collegiality across the campus. In addition, we frequently build in time for students to meet with our speakers so that the students have a chance to develop relationships that will advance their career as well as their research.



FALL RECEPTION

On October 3, 2012, The Center for the Study of Women and the Department of Gender Studies held their annual Fall Reception, at which students and faculty joined together to celebrate the new school year and to learn about upcoming events and grant and award opportunities. The Fall Reception allows students and faculty to connect with one another in an informal but intellectually stimulating environment that highlights shared interests. It also provides faculty and students new to UCLA with a welcoming, intimate atmosphere in which to make new friends and connections with others who share research interests in gender, sexuality, and women's issues.

GRADUATE STUDENT INITIATIVE: INTERVIEW SUCCESS WORKSHOP

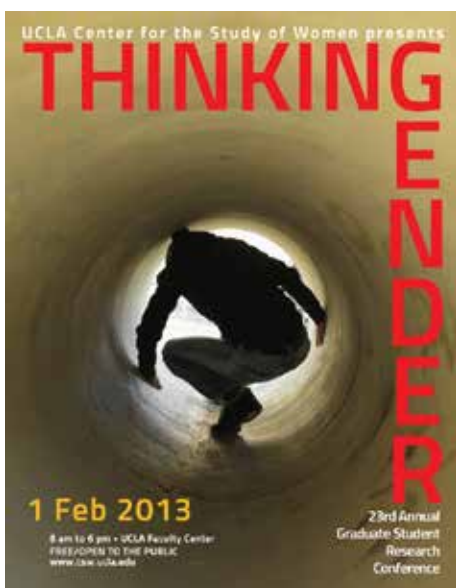
Part of CSW's ongoing Graduate Student Initiative, this annual workshop helps new Ph.D.s prepare for going on the academic job market. CSW Interim Director Rachel Lee and Sarah Haley, Assistant Professor in the Department of Gender Studies, met with a group of almost forty graduate students to address the process of applying and interviewing for academic positions. They provided step-by-step advice on preparing for job talks and interviews, with tips on how to choose an outfit to how to discuss one's academic work in a concise and compelling fashion.

D. Research, Teaching, and Programming



LIFE (UN)LTD SPEAKER: CHARIS THOMPSON

Charis Thompson, professor and chair of the Department of Gender and Women's Studies at UC Berkeley and associate director of the UC Berkeley Center for Science, Technology, and Medicine in Society, gave a presentation on October 24th, 2012 that was part of the Life (Un)Ltd Working Group. Titled "Three Times a Woman: A Gendered Economy of Stem Cell Innovation," Thompson's talk presented insights into the gendered divisions inherent in the institution of regenerative medical research. In the presentation, Thompson said that the anatomy of the state-based science economy has three parts, all connected to the question of how to sell the idea of voting for science that is ethically questionable and federally underfunded. The first part is pro-cures rhetoric to communicate that people are voting for cures, adding a moral imperative to the discourse. The second is procurement, the focus on which bypasses embryo politics. The third is biocuration, referring to chains of custody for, bookkeeping of, and compliance with stem cell research. Thompson pointed out that women are central to these issues: they are linked to them by virtue of occupying related positions as voters, care-ers, funders, advocates, and body labor and body parts donors, among other things.

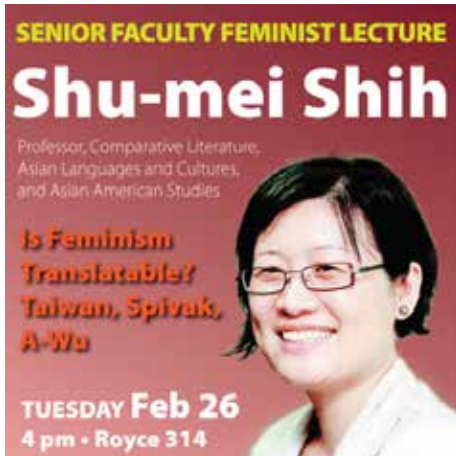


THINKING GENDER:

23RD ANNUAL STUDENT RESEARCH CONFERENCE

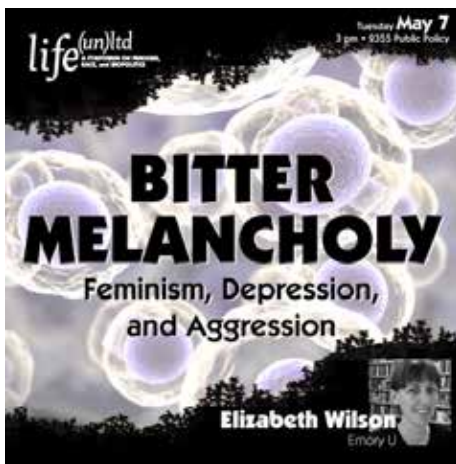
On February 1, 2013, CSW held its annual Thinking Gender conference, a public conference highlighting graduate student research on women, sexuality, and gender across all disciplines and historical periods. This year's plenary session was titled "Surplus Life: Infrastructure, Architecture, and Temporality." This year, CSW hosted over 200 attendees from Germany, the United Kingdom, Austria, Norway, Canada, as well as the U.S. Scholars who were not able to attend the conference were able to read the published papers through The California Digital Library, as well as read reviews and excerpts from the conference in a special issue of *CSW Update* (which included contributions by senior scholars and graduate students, many of whom are employed by CSW).

D. Research, Teaching, and Programming



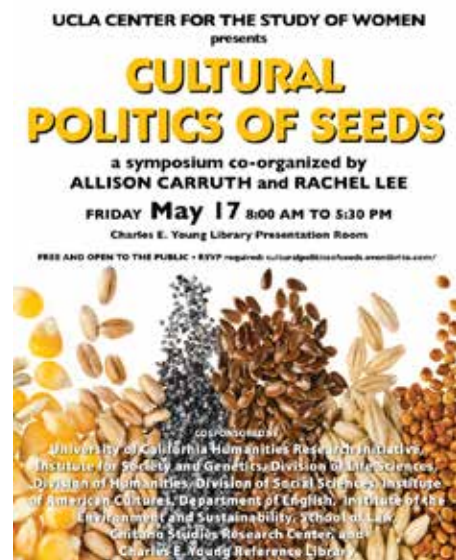
SENIOR FACULTY FEMINIST LECTURE: SHU-MEI SHIH

On February 26, 2013, Shu-mei Shih, Professor of Comparative Literature, Asian Languages and Cultures, and Asian American Studies, gave a lecture titled “Is Feminism Translatable? Taiwan, Spivak, A-Wu.” The lecture explored the translatability of feminism across geocultural differences, specifically in Taiwan. Shih’s lecture sought to further the discussion of feminist ethics of encounter across subnational and transnational spaces. The Senior Faculty Feminist Lecture featured Sandra Harding, Professor in the UCLA Graduate School of Education and Informational Studies and CSW Director from 1996 to 2000, as respondent.



LIFE (UN)LTD SPEAKER: ELIZABETH WILSON

On May 7, 2013, Elizabeth Wilson, a Professor of Women and Gender Studies at Emory University, gave a lecture on “Bitter Melancholy: Feminism, Depression, and Aggression.” Wilson spoke about her current project and book, *Gut Feminism*, regarding a feminist analysis of biomedical theories of depression. Wilson’s research draws on the resources of biology, evolutionary theory, and neuroscience to develop new models for feminism and queer theory. Wilson was invited to speak because her work this past year addresses many issues that CSW’s ongoing Life (Un)Ltd research project explored this year: food and metabolism.



CULTURAL POLITICS OF SEEDS

Organized by Allison Carruth and Rachel Lee, “The Cultural Politics of Seeds” symposium looked at how gender, ethnicity, and race shape contemporary cultural and political movements related to seeds. Conceived as a forum for integrating research, policy, activism, and art practice, the symposium was a day-long event with three panels and two keynote talks. Also included was a related art exhibit at UCLA’s Art|Sci Center featuring Fallen Fruit, a Los Angeles-based art group. Presenters covered many subject areas including documenting the public fruit trees in urban and suburban environments, a case-study of a Oaxacan family of maize farmers regarding their seed variety, as well as the rise and fall of the South Central Farm in Los

D. Research, Teaching, and Programming

Angeles. The symposium was recorded and videos of the various presentations are available on CSW's YouTube playlist. See Appendixes 1 and 2.

DISSERTATION WRITING RETREAT

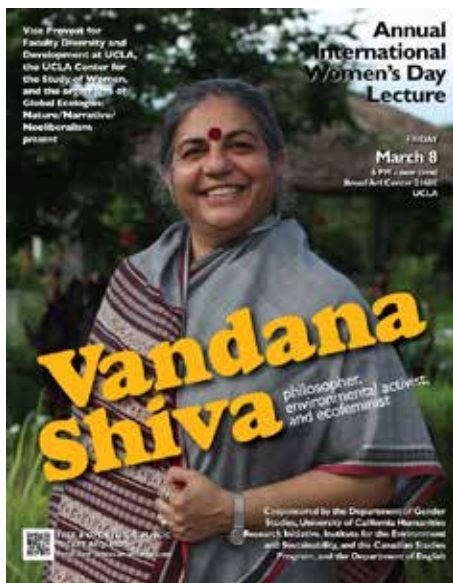
This year, the annual weekend-long dissertation writing retreat took place from June 21 to 23. As usual, it was all but overflowing with enthusiastic participants (unfortunately, some applicants had to be put on a waitlist because of space constraints). The retreat was open to any ABD students who work in CSW's mission areas. Home departments of the participants included Art History, Geography, Applied Linguistics, Economics, Anthropology, Italian, Comparative Literature, Political Science, Cinema and Media Studies, English, Gender Studies, Information Studies, Musicology, Sociology, World Arts and Cultures/Dance, Theater and Performance Studies, and Visual Studies. With more than twenty participants, including recipients of the CSW Irving and Jean Stone Dissertation Year Fellowships, CSW arranged for a second room so that all the writers would have sufficient space. At the end of the retreat, participants discussed ways that CSW can provide additional support and help them achieve success in this crucial year. Several participants decided to form writing groups, and CSW is providing space and organizational support. See Appendix 13.

Partnerships

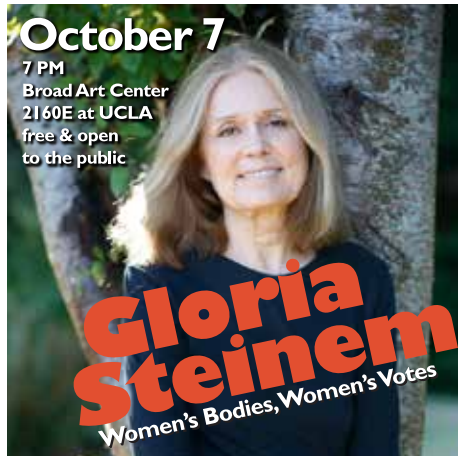
OFFICE OF FACULTY DIVERSITY AND DEVELOPMENT

Annual International Women's Day Lecture: Vandana Shiva

With the support of the Vice Provost for Faculty Diversity and Development and the expertise of Elizabeth DeLoughrey, an Associate Professor in the Department of English at UCLA, CSW planned a second event for International Women's Day. On March 8, 2013, Dr. Vandana Shiva, world-renowned philosopher, environmental activist, ecofeminist, and academic researcher on agricultural and women's empowerment issues, spoke about global struggles to assert and protect food and seed sovereignty, as well as sharing stories about efforts to defend ecological biodiversity and about ways to effectively advocate for sustainable alternatives to industrialized commodity-driven agriculture. The event was cosponsored by other campus units, including University of California Humanities Research Initiative, Institute for the Environment and Sustainability, and the Canadian Studies Program, the Divisions of the Humanities and Social Sciences, the Department of Gender Studies, International Institute, the Department of English,



D. Research, Teaching, and Programming

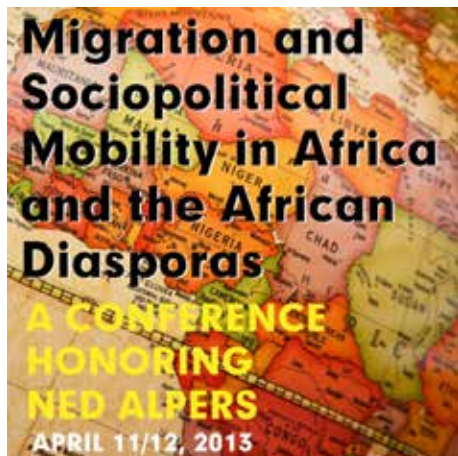


“Cultures in Transnational Perspective” UCLA Mellon Postdoctoral Program in the Humanities, and the Department of History. The talk was also the keynote address of the “Global Ecologies: Nature/Narrative/Neoliberalism” conference, which was organized by Elizabeth DeLoughrey, an Associate Professor in the Department of English at UCLA.

DEPARTMENT OF HISTORY

Women's Bodies, Women's Votes with Gloria Steinem

Organized by the Department of History and cosponsored by CSW, this event on October 7, 2012, featured the well-known feminist activist and writer Gloria Steinem. She spoke out about reproductive rights in the then-upcoming November election. Steinem's talk focused on the idea of “seizing control of reproduction” and how this lends itself to racism and sexism. She also spoke on the danger of attacks on abortion providers as well as abstinence-only sexual health education. The event attracted an audience of more than 350.



MIGRATION AND SOCIOPOLITICAL MOBILITY IN AFRICA AND THE AFRICAN DIASPORAS

Many former graduate students and current colleagues met at UCLA on April 11 and 12, 2013 to participate in the event hosted by the Department of History and cosponsored by CSW titled “Migration and Sociopolitical Mobility in Africa and the African Diasporas.” The conference honored the career of history professor Ned Alpers on his retirement after 45 years on the faculty at UCLA. During the two days of panels, twenty papers were presented concerning subject areas of African women's history, Indian Ocean history, African Diaspora, slavery, and a range of related topics, all followed by lively discussion with dozens of audience members. Participants traveled from across North America and included several Canadians, as well as Thomas Vernet, a French historian now based at the Sorbonne. Kathleen Sheldon, a CSW Research Scholar, reported on the conference in the June 2013 issue of *CSW Update*.



DEPARTMENT OF FRENCH AND FRANCOPHONE STUDIES

Spectacle and Spectator: Ways of Seeing and Being Seen (Other Publications)

In this interdisciplinary conference on Thursday, October 11, 2012, papers were presented addressing the perception of women both by society and by women themselves. Topics include Maghrebi author Nina Bouraoui, trans-

D. Research, Teaching, and Programming

BODIES, POLITICS, SUBJECTIVITIES

A celebration of the career of Carole Browner

FRIDAY Apr 26

Grand Salon, Kerckhoff Hall

CONFERENCE: 10 am to 5:30 pm

RECEPTION/DANCE: 6 to 9 pm

MUSIC: Magnolia
Memoir

ORGANIZED
BY SONDR
HALE AND
JENNY
SHARPE



vestism in medieval fabliaux, and the intersections of migrant identity and gender in the works of Calixthe Beyala and Fatou Diome. Keynote speaker was Jean-Marie Apostolides, a Professor at Stanford University, whose work focuses on the impact of images on society.

DEPARTMENT OF GENDER STUDIES

Bodies, Politics, Subjectivities: A Celebration of the Career of Carole Browner

This all-day conference organized by Jenny Sharpe, Chair of the Department of Gender Studies, and Sondra Hale, Emeritus Professor in the Department of Anthropology, and cosponsored by CSW was held on April 26, 2013, and honored Carole Browner, an extraordinary scholar who has done essential work connecting gender, reproduction, and health. Browner's friends and colleagues praised her diverse contributions to UCLA's community.

LGBT STUDIES

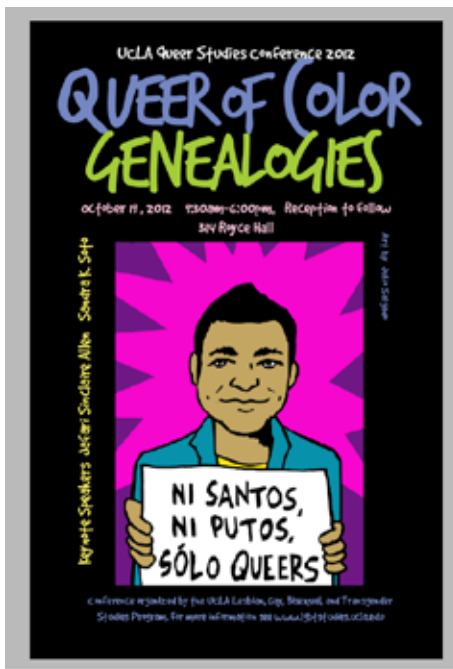
UCLA Queer Studies Conference: Queers of Color Genealogies

Hosted on October 19, 2012, and organized by Maylei Blackwell, Associate Professor in the Departments of Chicano/a Studies and Gender Studies, and Uri McMillan, Assistant Professor in the Department of English, this annual conference co-sponsored by CSW focused on the theme of "Queers of Color Genealogies." The conference included topics regarding the community needs of LGBT youth of color, transnational aesthetics/erotics, and remapping LGBT histories, among other interesting areas of research.

Beyond Queering the Chain of Care:

Affective Feminizations, Biological Investments

On February 13, 2013, CSW cosponsored this colloquium put on by LGBT Studies, which featured speaker Aren Z. Aizura, a Mellon Postdoctoral Fellow of the Department of Gender Studies and Institute on Gender at Rutgers University. Aizura spoke of his research on how bio-



D. Research, Teaching, and Programming

STRANGERS IN A STRANGE LAND: ART, AESTHETICS AND DISPLACEMENT a symposium

This symposium—organized by Saloni Mathur, Associate Professor, Department of Art History, and Aamir Mufti, Department of Comparative Literature—is held in conjunction with the exhibition *Zarina: Paper Like Skin*, curated by Alyssa Beach of the UCLA Graessle Center for the Graphic Arts. It brings together world-renowned scholars in the humanities to consider questions of displacement, displacement, and the exilic imagination in modern art and postmodern thinking.

Panel topics include: Irene Stelin, Harvard University (opening address); Shama Goudgouth, Columbia University; Haiman Feldman, Northwestern University; Tessa Altam, University of Illinois; Chicago Sonal Khulbe, University of Washington; Seattle; Frank Dack, Cornell University; and Shilpa Shah, New Delhi-based vocalist. Andrew Haywood, the Milbank Professor of German and Comparative Literature at Columbia University delivers the closing address.

COSPONSORS: Department of Comparative Literature; UCLA Center for the Study of Women (Doris of Humanities); Dean of Arts and Architecture; and Don Newman, Professor, Ethnomusicology.

NOV 9
9:30 am to 5:30 pm
Hammer Museum,
UCLA



Drawing Line 2011, Zarina Hashmi
Work on paper in black on handmade paper, 2011
Collection: UCLA Center for the Study of Women, Paper Like Skin, curated by Alyssa Beach of the UCLA Graessle Center for the Graphic Arts

political technologies of race, gender, transnationality, medicalization, and political economy shape and are shaped by transgender and queer bodies. The paper referenced theories of orientalism and self-orientalism, affective labor and biopolitical subjectivity against transgender studies to provoke affective labor theory to “queer” itself.

DEPARTMENTS OF ART HISTORY AND COMPARATIVE LITERATURE

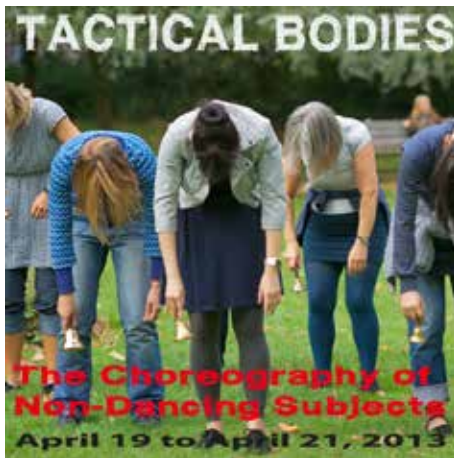
Strangers in a Strange Land: Art, Aesthetics and Displacement

This two-day symposium organized by UCLA faculty members Saloni Mathur and Aamir Mufti, of the Art History and Comparative Literature departments, respectively, was co-sponsored by CSW. Hosted on November 9, 2012, the event was held in conjunction with “Zarina: Paper like Skin,” a retrospective exhibition at the Hammer Museum on the art of Zarina Hashmi. “Strangers in a Strange Land” brought together a range of disciplines from literary studies to musicology to art history to examine some of the themes that animate Zarina’s work. The discussion placed her art at the intersection of important social, political, and cultural processes in contemporary global society, showing how it exemplifies the exilic imagination in modern art and aesthetic thinking.

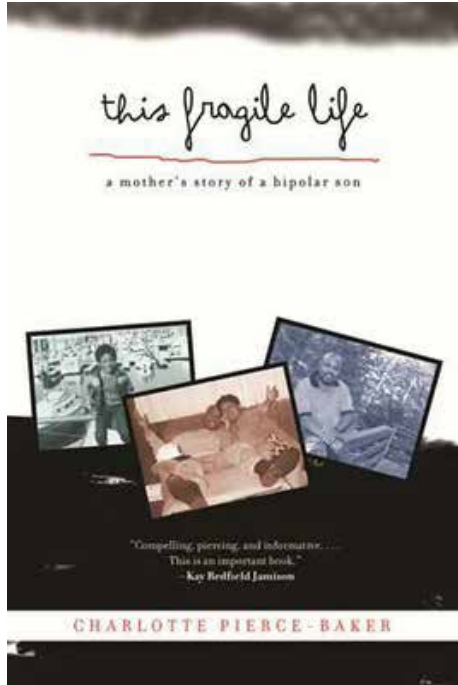
WORLD ARTS AND CULTURES/DANCE

Politics in Art Forms

Hosted on February 7 and 8, 2013, by the Department of World Arts and Cultures/Dance and cosponsored by CSW, this two-day colloquium was an international and interdisciplinary event where artists and scholars met to discuss the relationships between art forms and politics: Are some art formats, genres, and disciplines easier to politicize than others? Under what conditions can art can be a vector for political and civic messages, and to what extent is politicization in art appropriate and legitimate in the creators’ eyes? What are the relationships between artistic innovation and political/social critique, and how have they changed over time? Participants drew from their artistic or academic work to debate on panels and with the audience around such questions. Music, dance, film, and visual arts at large were at the heart of this stimulating public conversation.



D. Research, Teaching, and Programming



Tactical Bodies: the Choreography of Non-Dancing Subjects

Organized by the Department of World Arts and Cultures/Dance and co-sponsored by CSW, this three-day joint conference from April 19 to 21, 2013, examined the possibilities and problematics of choreographic analysis. Choreographers and dance researchers have extended the concept of choreography to works that do not necessarily involve danced movement, challenging the assumption that choreography must relate to dance and vice versa. Researchers from disciplines like performance studies, art history, gender studies, LGBTQ studies, education, and art history, among others, were invited to provide an opportunity to enrich the discourse surrounding “choreography” while asking what the concept does in disciplines other than dance studies.

RALPH J. BUNCHE CENTER FOR AFRICAN STUDIES

A Conversation with Author Charlotte Pierce-Baker

On February 11, 2013, author Charlotte Pierce-Baker, Professor of Women’s and Gender Studies and English at Vanderbilt University, spoke about her latest work *This Fragile Life: A Mother’s Story of a Bipolar Son*.



CENTER FOR SOUTHEAST ASIAN STUDIES

Treacherous Subjects: Gender, Culture, and Trans-Vietnamese Feminism

Professor Lan P. Duong, Media and Cultural Studies Department, UC Riverside, gave a talk on her second book, *Transnational Vietnamese Cinemas: Imagining Nationhood in a Globalized Era*, on February 22, 2013.

DEPARTMENT OF ENGLISH

Global Ecologies: Nature/Narrative/Neoliberalism

This two-day conference on March 8 and 9, 2013, organized by Professor Elizabeth DeLoughrey, hosted by the Department of English, and cosponsored by CSW, staged an interdisciplinary conversation about globally relevant environmental issues such as neo-liberalism, militarism, waste dumping, deforestation, and food, land, and water sovereignty. The conference foregrounded international environmental issues and highlighted the importance of how attention to narrative form is vital to understanding and enhancing the impact on public understandings of environmental crisis. The conference brought together

D. Research, Teaching, and Programming



scholars at UCLA and beyond who are concerned with how narrative forms have differently inflected the representation of non-human nature, and to raise questions about the challenges environmental storytelling poses for collaboration between the global North and the global South.

AMERICAN INDIAN STUDIES CENTER

May 23, 2013, Mishuana Goeman gave a talk about her new book, *Mark My Words: Native Women Mapping Our Nations*. In it, she traces settler colonialism as an enduring form of gendered spatial violence, demonstrating how it persists in the contemporary context of neoliberal globalization.

DEPARTMENT OF PUBLIC POLICY

Gender in Research and Practice

On May 23, 2013, the Policy Professionals for Diversity and Equity and the Department of Public Policy, along with the co-sponsorship of CSW, put on this interactive lunchtime discussion that showcased the work of Luskin faculty and students, and brought together students, faculty, and staff to discuss research interests as they relate to gender and systems of oppression. The discussion was part of a Luskin-wide spring event series titled “The Personal is Collective: Taking Action Towards Gender Equity.”

D. Research, Teaching, and Programming

4. Publications Generated as a Result of CSW Activity

In addition to the monthly newsletter featuring research reports by UCLA faculty and graduate students (see Appendix 14), our faculty development grants enable junior, as well as senior, faculty to begin and complete scholarly work. We awarded eight faculty development grants this year and expect to see the products of those grants come to fruition in the next few years. See Appendix 20 for a full list of this year's recipients and descriptions of their projects.

a. Publications from CSW Faculty Development Grants

Camacho, Keith. "After 9/11: Militarized Borders and Social Movements in the Mariana Islands," *American Quarterly* 64:4 (2012): 685-713.

Everly, B. & Shih, M (2012). Ambiguity in social identity cues harms performance. Manuscript in preparation.

Goldman, Andrea. *Opera and the City: The Politics of Culture in Beijing, 1770-1900* (Stanford: Stanford University Press, 2012).

Guardino, C.M., Dunkel Schetter, C., Lu, M., Bower, J., & Smalley, S. (in press). A Randomized Controlled Pilot Trial of Mindfulness Training for Stress Reduction during Pregnancy. *Psychology & Health*.

Laura Enriquez and Abigail C. Saguy. "Coming Out as Undocumented and Unafraid: Social Movement Spillover and Cultural Innovation." Under Review. *Social Problems*.

Michael Stambolis and Abigail C. Saguy. "Telling Your Homosexuality: France and the Cultural Limits of 'Coming Out'" Under Review. *The Sociological Quarterly*.

Robbins, C.M., Dunkel Schetter, C., Lu, M., & Bower, J. (2010, August). Trial of a Mindfulness-Based Stress Reduction Intervention during Pregnancy. American Psychological Association Convention, San Diego, California.

Robbins, C.M. (2010, Feb) Trial of a Mindfulness-Based Stress Reduction Intervention during Pregnancy (Preliminary Findings), UCLA Center for the Study of Women Thinking Gender conference, Los Angeles, California.

Thompson, Katrina Daly. "Discreet Talk about Supernatural Sodomy, Transgressive Gender Performance, and Male Same-sex Desire in Zanzibar Town." *GLQ: A Journal of Lesbian and Gay Studies* 21 (forthcoming).

D. Research, Teaching, and Programming

b. Publications and Presentations by CSW Research Scholars

Basarudin, Azza. Speaker, “Gender, Rights and Sexuality in Contemporary Malaysia.” *Malaysia Forum*, UCLA, April 6, 2013.

Basarudin, Azza. “The Storytellers of Cairo: Spinning Tales, Transforming Culture and Mediating Belonging?” *Journal of Middle East Women’s Studies/JMEWS* (under review)

Basarudin, Azza. “Friendship, Solidarity and Love in Feminist Ethnography” *Dissident Friendships: Imperialism, Feminism, and the Possibility of Transnational Solidarities*, ed. Elora Chowdhury and Liz Philipose (co-authored with H. Bhattacharya, under review)

Basarudin, Azza. “Anthropology.” In *Encyclopedia of Women and Islamic Cultures*, Suad Joseph, general ed. Leiden: Brill Publishers, 2013. (solicited publication, under review)

Bensick, Carol M., “Dewey’s Remarks on *Unmodern Philosophy and Modern Philosophy* in his Letters to Corrine Chisholm Frost.” Submission, Society for the Advancement of American Philosophy, Annual Meeting, March 2013

Bensick, Carol M., “Mary Whiton Calkins—Successful, But Happy?,” Special Session, Mary Whiton Calkins Centennial, Society for the Study of Women Philosophers, American Philosophical Association.

Bensick, Carol M., “William James and Women,” 2013 Summer Institute in American Philosophy, July 8-13.

Dexter, Miriam R., My 2010 book, *Sacred Display: Divine and Magical Female Figures of Eurasia*. Miriam Robbins Dexter and Victor H. Mair. Amherst, New York: Cambria Press, 2010 – won the Sarasvati award for the best nonfiction book (1 award given every other year) from the Association for the Study of Women and Mythology. (Awarded May, 2012)

Dexter, Miriam R., “Interviewed for a documentary, “Femme: Women Healing the World,” directed by Emmanuel Itier. This film has just begun to be disseminated throughout the world in spring of this year (2013),”

Dexter, Miriam R., “Sacred Display: Divine and Magical Female Figures of Ancient Eurasia.” Conference paper for Goddess Spirit Rising, September 6-8, 2013.

Dexter, Miriam R., “Brigit, Sacred Virginity, and the Elements of Perpetual Energy.” In *Brigit: Sun of Womanhood*, Michael McDermott and Patricia Monaghan and, eds. Las Vegas, Nevada: Goddess Ink, Ltd. (Chapter in Anthology), 1-7.

D. Research, Teaching, and Programming

Dexter, Miriam R., "Sacred Display: New Findings." Miriam Robbins Dexter and Victor H. Mair. Sino-Platonic Papers. (Online Journal, University of Pennsylvania) <http://sino-platonic.org/> (Due July, 2013)

Dexter, Miriam R., "Love Goddesses of the early historic age." In *The Mythology of Venus: Ancient Calendars and Archaeoastronomy*, ed. Helen Benigni. Lanham: University Press of America, 49-66.

Dexter, Miriam R., "The Monstrous Goddess: The Degeneration of Ancient Bird and Snake Goddesses into Historic Age Witches and Monsters." *Iz-kustvo & Ideologiya: Ivan Marazov Decet Godini Po-K'sno (Art and Ideology: Festschrift for Ivan Marazov)*. Bulgarian and English. (Chapter in Anthology) Sophia: Universitetsko Izdatelstvo "Sv. Kliment Ochridski," 390-403.

Dexter, Miriam R., "La Terribile, Eroti Ca E "Bella" Medusa E Il Serpente E L'uccello Neolitici." Italian Translation of "The Ferocious And The Erotic: 'Beautiful' Medusa and the Neolithic Bird and Snake." Translated by Mariagrazia Pelaia. *Prometeo: Rivista trimestrale di scienze e storia*. Anno 31 Numero 122. June, 2013, 20-29.

Dexter, Miriam R., "Further Thoughts on the V and the M in the Danube Script: The Danube Script and the Old European Goddess." *On the Trail of Vlassa, Fifty years of Tartaria Excavations*. Conference proceedings, 1 September – 5 September 2011. Sponsored by "Eftimie Murgu" University, Resita and the Institute of Archaeomythology, Sebastopol. (Chapter in Anthology) (Forthc.)

Dexter, Miriam R., "Medb, the Morrigan, and Place in Ancient Ireland." Invited article for an issue of the online journal *AboutPlace*. <http://about-placejournal.org/> The issue is titled "Earth, Spirit, Society." This issue will be online in August, 2013.

Dexter, Miriam R., "Sacred Display": Divine and Magical Female Figures of Ancient Eurasia." Miriam Robbins Dexter and Victor H. Mair. Keynote. Conference Proceedings May, 2012. Goddess Ink Press. Due spring 2014.

Dexter, Miriam R., "Sacred Display" Conference paper by Victor H. Mair and Miriam Robbins Dexter. Conference publication. (Forthc.)

Feinstein, Margarete M. "The Impact of Catastrophe on Jewish Sexuality: Jewish Displaced Persons in Occupied Germany, 1945-1950," *Anthology on Judaism and Sexuality*, ed. Lisa Grushcow, CCAR Press, in press.

Feinstein, Margarete M. Review of Christian Wiese and Paul Betts, eds. *Years of Persecution, Years of Extermination: Saul Friedländer and the Future of Holocaust Studies*, *Shofar: An Interdisciplinary Journal of Jewish Studies* 31:3 (Spring 2013), also posted at www.case.edu/artsci/jdst/mjsa.html.

Feinstein, Margarete M. "Sex After the Shoah: Experimentation and Tradition in the Displaced Persons Camps," Annual Western Jewish Studies Association Conference, Los Angeles, CA, April 7, 2013.

Feinstein, Margarete M. Invited participant, "Landscapes of the Uprooted: Refugees and Exiles in Postwar Europe," U.S. Holocaust Memorial Museum Summer Research Workshop, to be held August 12-23, 2013.

Gunnell, Kristine A., "Forty Years after *Roe v. Wade*: Reproductive Rights and Justice Today," Moderator, Huntington Women's Studies Seminar, March 9, 2013.

Gunnell, Kristine A., "Daughters of Charity: Women, Religious Mission, and Hospital Care in Los Angeles, 1856-1927," Vincentian Studies Institute at DePaul University. (manuscript in progress)

Gunnell, Kristine A., "Daughters of Charity as Cultural Intermediaries: Women, Religion, and Race in Early Twentieth-Century Los Angeles." Article, *West Coast Catholicism*, U.S. Catholic Historian.

Hant, Myrna. "Feminism Comes of Age on Television: The Portrayals of Empowered Older Women from *Murder She Wrote* to *Damages*" (under review)

Hant, Myrna. "Oy Vey (Oh , Pain) - The Persistence of the Jewish Mother Stereotype on Television" (under review)

Hant, Myrna. "Havurot" *Multicultural America: A Multimedia Encyclopedia* (under review)

Hant, Myrna. "Stages of Transitions" Keynote Speaker, Life Transitions Conference, National Council of Jewish Women

Hant, Myrna. "The Art of Aging" Workshop, Jewish Women's Conference at UCLA

Maynard-Tucker, Gisele. "Maternal Mortality in Madagascar: A Critical Methodology," Presentation for Session "Maternal Health," 73rd Annual Meeting of the Society for Applied Anthropology, Denver, Colorado, March 2013.

Maynard-Tucker, Gisele. "Women's Reproductive Health and Illiteracy: Experiences and Issues in Development," (manuscript in progress.)

Nicolaides, Becky, and Andrew Wiese, "Suburban Disequilibrium," *New York Times*, Sunday Review section, April 7, 2013.

Nicolaides, Becky. C. Allan and Marjorie Braun Fellowship, Huntington Library, April 2013

Nicolaides, Becky, "Suburban Landscapes of Los Angeles," in *Overdrive: Los Angeles Constructs the Future, 1940-1990*, edited by Wim de Wit and Christopher James Alexander (Los Angeles: Getty Research Institute, 2013)

Nicolaides, Becky, Invited lecture, "From Green Acres to Suburban Poverty," lecture in conjunction with the A. Quincy Jones exhibition, Hammer Museum, Los Angeles, Ca. June 2013.

Nicolaides, Becky, Keynote address, "Stills from L.A.: Reflections on diversity and the remaking of suburban life," British Association for American Studies annual meeting, University of Exeter, UK, April 2013.

Nicolaides, Becky, Chair of panel, "Urban History/State of the Field: Rethinking Working Class Suburbia," annual meeting of the Organization of American Historians, San Francisco, Ca. April 2013.

Nicolaides, Becky, Commentator on panel, "Diversity, Immigration, and Inequality in Contemporary Suburbia," meeting of the Urban History Association, New York City. Oct 2012.

Nicolaides, Becky. Presenter, "Suburbia in Transition: Political turmoil in Pasadena, Ca., 1960-1980," annual meeting of the American Historical Association - Pacific Coast Branch, San Diego, Ca. Aug 2012

Nicolaides, Becky. Presenter, "Exploring social and civic engagement in postwar Los Angeles suburbia," Urban History Seminar, Chicago History Museum, Chicago. May 2012.



Price, Jennifer. *Our Malibu Beaches*, for the *Know What* apps network, May 2013

Price, Jennifer. Stop Saving the Planet!—and Other Tips from Rachel Carson, in *Rachel Carson: Encounters and Legacies*, eds. Lawrence Culver et al, *Rachel Carson Center Perspectives*, fall 2012

Price, Jennifer. *Nature Trail*, signage & pamphlet, on how nature, history, & social geography have shaped the landscape, *Rivers Between Us*, Laumeier Sculpture Park, St. Louis, April-August 2013—& permanent collection

Price, Jennifer. Enact a Sustainable City! Adventures in the Brave New World of Environmental Art Actions, Keynote Speaker, Sustainability Lecture Series, Cal State Fullerton, May 2013

Price, Jennifer. Keynote, symposium on river restoration, Technion/Israel Institute of Technology, Haifa, Israel, January 2013

Price, Jennifer. Stop Saving the Planet!: Environments & Societies Colloquium, UC Davis, November 2012; Environmental Humanities Project, Stanford University, October 2012.

Price, Jennifer. Stop Saving the Planet!, Generation Anthropocene, podcast series, Stanford University, March 2013.

Sheldon, Kathleen. "Women and African History," in *Oxford Bibliographies in African Studies*, ed. Thomas Spear (New York: Oxford University Press, 2012).

Sheldon, Kathleen. "Researching the History of African Market Women," Migration and Sociopolitical Mobility in Africa and the African Diasporas: International Conference in honor of Edward A. Alpers, UCLA, April 11-12, 2013

Sheldon, Kathleen. "A Longitudinal View of African Women's Marketing: The Historiography of Market Women in Africa," African Studies Association (ASA), Philadelphia, November-December 2012.

Wexler, Alice. "Eugenics, Heredity, and Huntington's Disease: A Brief Historical Perspective," *Journal of Huntington's Disease*.

Wexler, Alice. "Gender, Genetics, and Popular Culture: the Case of Huntington's disease." UCLA Medical Humanities Series, January 2013.

Zukow-Goldring, P., & Rader, N. de Villiers (2013). Dynamic synchrony and early word learning. In P. Brooks & V. Kempe (Eds.), *Encyclopedia of Language Development*. Sage Publications.

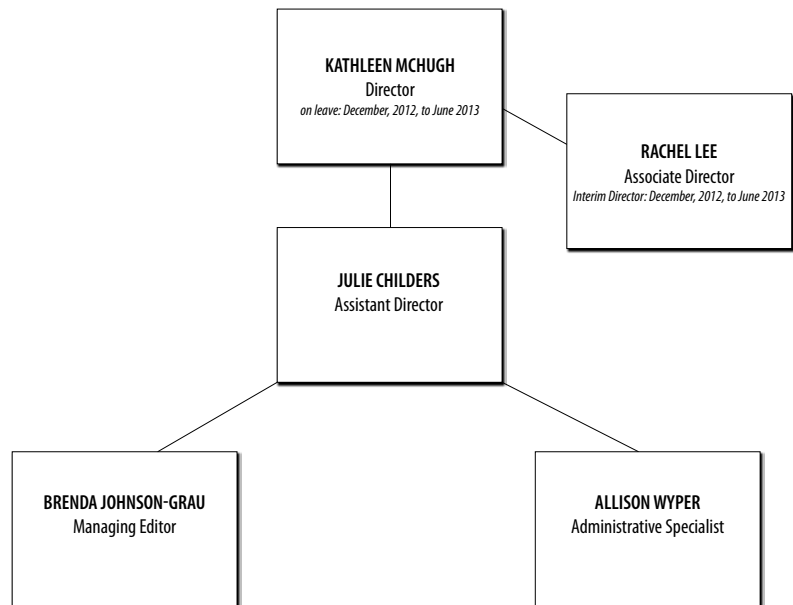
Zukow-Goldring, P. & Rader, N. de Villiers. (2013, in revision). SEED Model of Early Language Development: The Dynamic-Coupling of Infant-Caregiver Perceiving and Acting Forms a Continuous Loop during Interaction. In K. Rohlfing & G. Deak (Eds.), *IEEE Transactions on Autonomous Mental Development*.

Rader, N. de Villiers, Zukow-Goldring, P., Miller, S. (2013, April). Dynamic synchronous gestures assist word learning in low functioning ASD children Aged 5-7 years. Poster presented at the Biennial Meeting of The Society for Research in Child Development. Seattle, Washington.

Rader, N. de Villiers, Zukow-Goldring, P., & Miller, S. (2013, April). Window to the mind: Pupil dilation reveals attentional processing in early word learning. Poster presented at the Biennial Meeting of The Society for Research in Child Development. Seattle, Washington.

E. Budget and Staffing

1. Organizational Chart



2. Changes in Budget and Staffing

In this year, we consolidated staff responsibilities by eliminating our part-time Administrative Assistant position and absorbing the administrative tasks into the responsibilities of the Assistant Director, Administrative Specialist, and Managing Editor. Our Administrative Specialist, Erma Acebo, left CSW for another job on campus and we deliberated on staffing before making a decision about hiring. See Appendix 21 for a list of our staff and personnel. For a budget overview, see Appendixes 22 and 23.

3. Budget and Staffing Priorities

Our budget and staffing priorities are to continue our fundraising efforts and to maximize efficiency with staffing.

As part of budget priorities, and fundraising efforts, we will expand our grant applications for our new research and community outreach projects as detailed in the next section.

F. Strategic Plan

1. Goals and Objectives

During the upcoming academic year, CSW has identified the following goals as part of our strategic plan:

- Complete WSMALA project with capstone project; explore future of oral history component with Center for Oral History Research.
- Complete final year of NEH/Mazer project; add an oral history component plan and execute capstone event, publish resource book for the archive and the project.
- Continue Faculty Manuscript Workshop through the CSW Dr. Penny Kanner Next Generation Fellowship; explore opportunity for university-wide manuscript workshop project with UCLA Office of Faculty Diversity and Development.
- Complete the Life (Un)Ltd project:
 - Continue to program on indigenous, transnational scholarship addressing the impact of bioscience on First Nations and gender non-conformist communities on research by LU members.
 - Write grants to extend LU programming and research by way of UCHRI working group funding, conference funding, possibly multi-campus research group funding, and donor funding.
 - Explore opportunities for future of the project, including avenues of collaboration with other universities in Southern California.
- Continue Fundraising Initiative begun in AY 2012-13, working on the strategic plan with Development begun in AY 11-12, focusing on donor relations, forming a CSW Development Advisory Board.