



# UCLA CENTER FOR THE STUDY OF WOMEN

## 2010-2011 Annual Report

July 1, 2010–June 30, 2011

**KATHLEEN MCHUGH**

Director

# Contents

---

A. Mission	3
B. Summary of Accomplishments	4
1. Most Important Accomplishment	4
2. CSW's Impact on UCLA	5
C. Progress Report on Goals	6
Women's Social Movements in Los Angeles (WSMALA)	6
New Majorities, Shifting Priorities: Difference and Demographics in the 21st Century Academy	10
Women and STEM	12
Policy Briefs Series	14
Website	16
Newsletter	16
Videocasts	18
D. Research Teaching and Programming	19
1. Core and Affiliated Faculty	19
2. External Funding	22
3. Scholarly and Instructional Activities	23
4. Publications Generated as a Result of CSW activity	28
E. Budget and Staffing	34
1. Organizational Chart	34
2. Changes in Budget and Staffing	34
3. Budget and Staffing Priorities	34
F. Strategic Plan	35
Goals and Objectives	35
G. Appendices	
1. New Majorities Survey Report	
2. New Majorities Conference Program	
3. Faculty Curator Grant Report by Jenessa Shapiro	
4. Policy Brief Digest	
5. Contents of Newsletter Issues	
6. Downloads from CSW's California Digital Library site	
7. Videocasts	
8. Development Funds	
9. Thinking Gender Conference Program	
10. Student Awards and Grants	
11. Travel Grant Award Recipients	
12. Awards and Grant Committee Members	
13. Feedback from Dissertation Writing Retreat Participants	
14. Research Scholars	
15. Faculty Development Grant Recipients	
16. Tillie Olsen Research Grant Recipients	
17. Staff and Personnel	
18. Fiscal Summary	

# A. Mission

---

**T**HE MISSION OF THE UCLA CENTER FOR THE STUDY OF WOMEN (CSW) is to create and sustain a productive intellectual community dedicated to research concerning women, gender, and sexuality. Our multidisciplinary constituency includes UCLA faculty, graduate students, undergraduates, and community scholars in Los Angeles, but also extends, through our conferences and programming, to scholars doing gender-based research throughout the U.S. and around the globe. We implement our mission through five interrelated objectives:

- CSW develops and fosters faculty and graduate student research about women, gender, and sexuality through our Faculty Curator and Development Grant Programs, conferences, research working groups, workshops, and programs and through fundraising to generate intra and extramural funding sources for that research.
- CSW provides publication venues for the dissemination of that research and sets up networks for communication and sharing of research to facilitate intellectual community.
- CSW creates productive scholarly relationships within and beyond the academic community through our research, programming, and publications activities
- CSW aids recruitment and retention efforts at UCLA through workshops, funding, and development focused specifically on junior faculty and through the networks of support we have developed to improve climate issues for underrepresented faculty and students
- CSW provides extensive support for graduate students through our Graduate Student Initiative, which includes a robust fellowship and grants program, research funding, professionalization workshops, programming, and employment.

Currently, CSW is fully engaged in all of these functions. Our mission has not changed over the past year. By refining goals and focusing on specific project-based fundraising, we were highly successful in gaining new resources.

# B. Summary of Accomplishments

---

## 1. Most Important Accomplishment

CSW's SINGLE MOST IMPORTANT ACCOMPLISHMENT DURING AY 10-11 was being awarded a National Endowment for the Humanities Grant in the amount of \$300,000.00 for our project: *Making Invisible Histories Visible: Preserving the Legacy of Lesbian Feminist Activism and Writing in Los Angeles*. The June L. Mazer Lesbian Archive, a grassroots organization that is the largest of its kind on the west coast and the second largest in the county, has extensive, unique historical materials pertaining to Los Angeles, California, and West Coast based organizations, artists, writers, and activists, as well as to U.S. and European figures prominent in lesbian and feminist history. This project will result in the processing and digitizing of eighty-five Mazer collections and more than a thousand video and audiotapes. We wrote and submitted the grant in June of 2010, received it in early May of 2011, and had the project up and running by the end of June.

The NEH project continues the vital collaboration among CSW, the Mazer Archive, and UCLA Library Special Collections, which grew out of a Community Partnership Grant CSW was awarded in AY 06-07 to process and digitize five Mazer collections. CSW not only processed these collections but also facilitated a long-term partnership between UCLA Library Special Collections, which was keen to enhance both their Los Angeles collections and their LGBT collections, and the Mazer Archive. Access to this material has been limited because of the archive's lack of resources. Now, all the Mazer's processed collections will be held at the UCLA Library.

This project makes a crucial contribution to the Los Angeles community, to UCLA, to the Mazer Archive, as well as to scholars all over the world who will have access to these extensive materials when the project is completed.

# B. Summary of Accomplishments

---

## 2. CSW's Impact on UCLA

AS THE DESCRIPTION OF THE MAZER PROJECT INDICATES, CSW has been very successful at making an impact at UCLA. Because our mission encompasses the entire university, CSW projects, grants, workshops, and programming are structured to have broad reach and impact, either through interdisciplinary projects that bring together scholars from diverse backgrounds (*Gender and Body Size*; *The Color of LGBT*; *The Gender of Terror*) and/or faculty grants, such as the Faculty Curator or Faculty Development Grants programs, whose eligibility extends to all faculty working in our mission areas. Our events, projects, and communications networks bring faculty working in different divisions and departments to the attention of other UCLA faculty and graduate students, as well as to scholars in our immediate, national, and international communities. The CSW Faculty Curator program has also been innovative insofar as it articulates a close alignment between faculty research projects and CSW events, cultivating substantial scholarly interactions among UCLA faculty, graduate students, and our visiting scholars and speakers.

## C. Progress Report on Goals

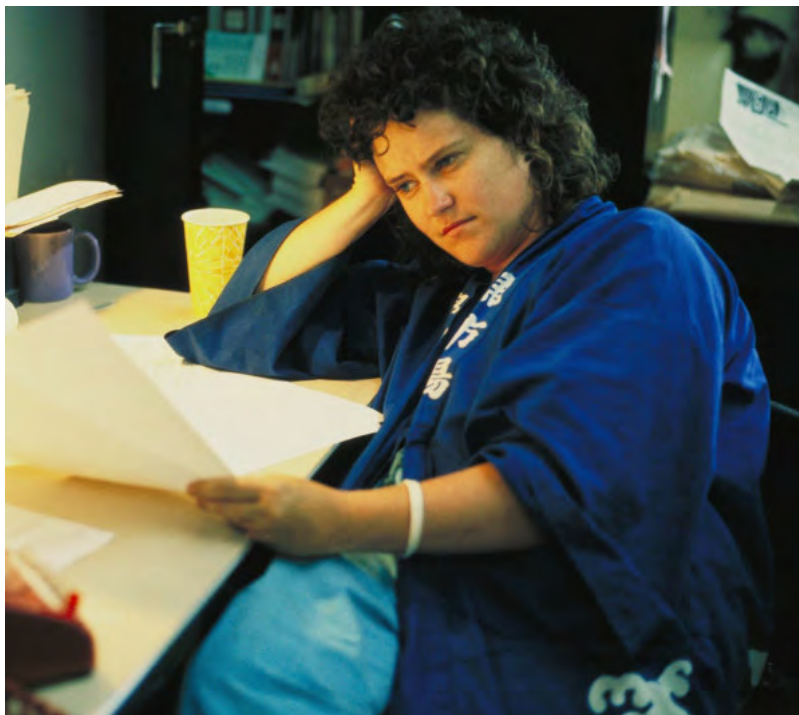
---

**W**E ARE DELIGHTED TO REPORT that we achieved the goals in last year's Annual Report and more. Here are brief summaries of this year's project outcomes:

### Women's Social Movements in Los Angeles (WSMALA)

This multiyear project, funded by an anonymous donor, is in its third year, the first of a third-year results phase. This year, we did primary research, conducting oral histories with women who played key roles in Los Angeles labor, arts, education, and health care activism in the period of 1960 to 1999. Teresa Barnett, Head of the Center for Oral History Research in the UCLA Library, trained four Graduate Student Researchers (GSRs). Using the secondary research collected in the first phase of the study, we identified potential candidates and completed four oral histories, each of which involved from three to seven interview sessions. Each of these women made significant contributions to Los Angeles social movements:

#### *Nancy Angelo*



**Nancy Angelo** is a performance and video artist who contributed to the development of the women's art movement in Los Angeles and worked in the Women's Building, a center for feminist art. Currently residing in San Francisco, Angelo works as an organizational psychologist and consultant.

## C. Progress Report on Goals: WSMALA

---

*Sondra Hale*



**Sondra Hale** is Professor of Anthropology and Women's Studies at the University of California, Los Angeles; former Co-Editor of *The Journal of Middle East Women's Studies* (2006 to 2010), and former Co-Chair of Islamic Studies, as well as a lifelong activist in social justice issues. Early in her career Hale played a key role in what became a national controversy surrounding the nature and purpose of the field of Women's Studies in the public university at California State University, Long Beach.

## C. Progress Report on Goals: WSMALA

---

*Sandra Serrano Sewell*



**Sandra Serrano Sewell** is executive director of Centro de Niños, a bicultural, bilingual children's center in Los Angeles, California. She is a lifelong activist for labor, children, and women's rights.



## C. Progress Report on Goals: WSMALA

*Bernita Ruth Walker*

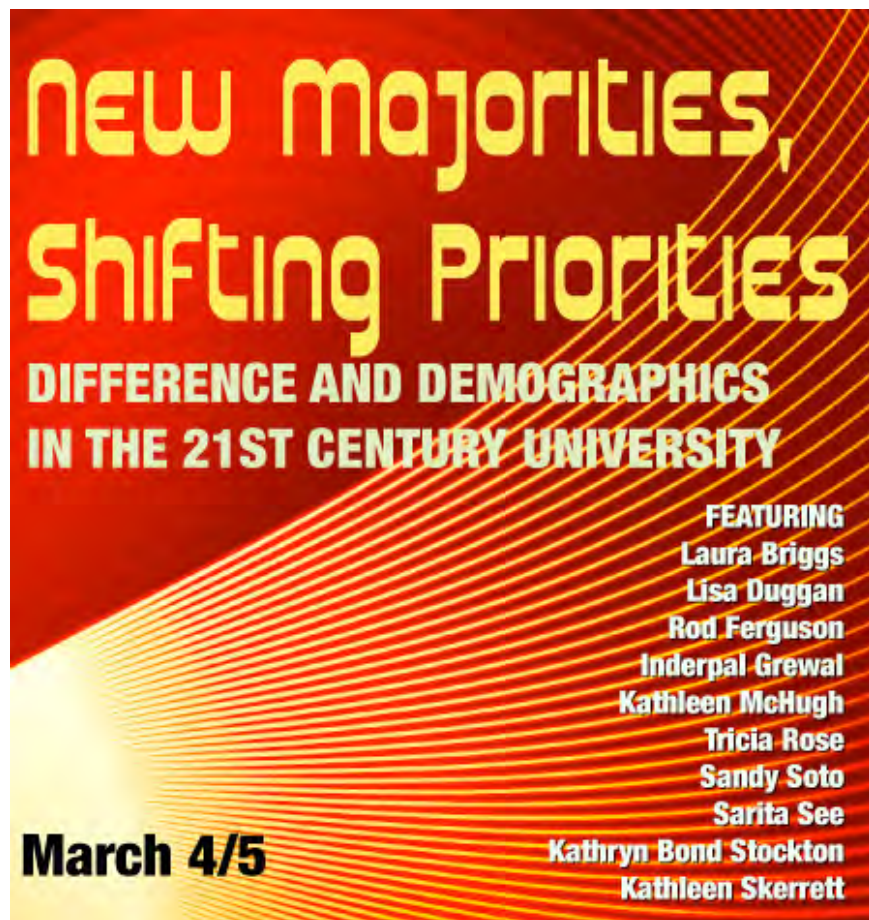


**Bernita Ruth Walker** is an avid leader and community activist in domestic violence prevention. Born and raised in Los Angeles she has given over thirty years of service to the Los Angeles community through the establishment of the Jenesse Center, Project Peacemakers Inc., the Oluremi Longhouse sober living facility in addition to numerous state, county and city board appointments.

The interviews were indexed, are being transcribed by the Center for Oral History Research (COHR), and will become available in the digital collection. More oral histories will be added to this WSMALA core collection at COHR in the coming year. As part of the UCLA Library, these histories will contribute valuable content to its Collecting LA initiatives. In addition, we also made progress with the WSMALA project website and online timelines and databases and now have a working template that we can expand to include all the years and materials developed in this project. These databases and timelines will summarize and provide broad access to the WSMALA research data.

## C. Progress Report on Goals: New Majorities

### New Majorities, Shifting Priorities: Difference and Demographics in the 21st Century Academy



“NEW MAJORITIES” was a yearlong project committed to assessing and responding to the challenges, both conceptual and institutional, that have and continue to be levied against certain field areas in the wake of the recent economic crisis. These field areas include gender/sexuality, ethnic, women’s, LGBT, and postcolonial studies.

The yearlong New Majorities project generated several outcomes. The first was a national survey developed from a questionnaire distributed to faculty and programs throughout the U.S. (See Appendix 1). The second was a conference held at UCLA in March of 2011 (Appendix 2), and the third a sister conference held at NYU in April of 2011. For the conference at UCLA, CSW brought scholars with expertise in gender/sexuality, ethnic, women’s, LGBT, and postcolo-

onial studies and, where possible, with intersectional and/or administrative appointments in more than one of these areas. We sought regional and institutional representation, inviting scholars from East, West, Midwest, South, and Southwest and from both public and private universities. At the UCLA conference, we welcomed closed to eighty conference attendees for morning and afternoon panels, each of which generated engaged and sustained dialogue amongst the participants and the audience. On the second day of the conference, the invited speakers and UCLA participants convened in a workshop to discuss the possibilities and challenges facing these programs at UCLA.

## C. Progress Report on Goals: New Majorities

---

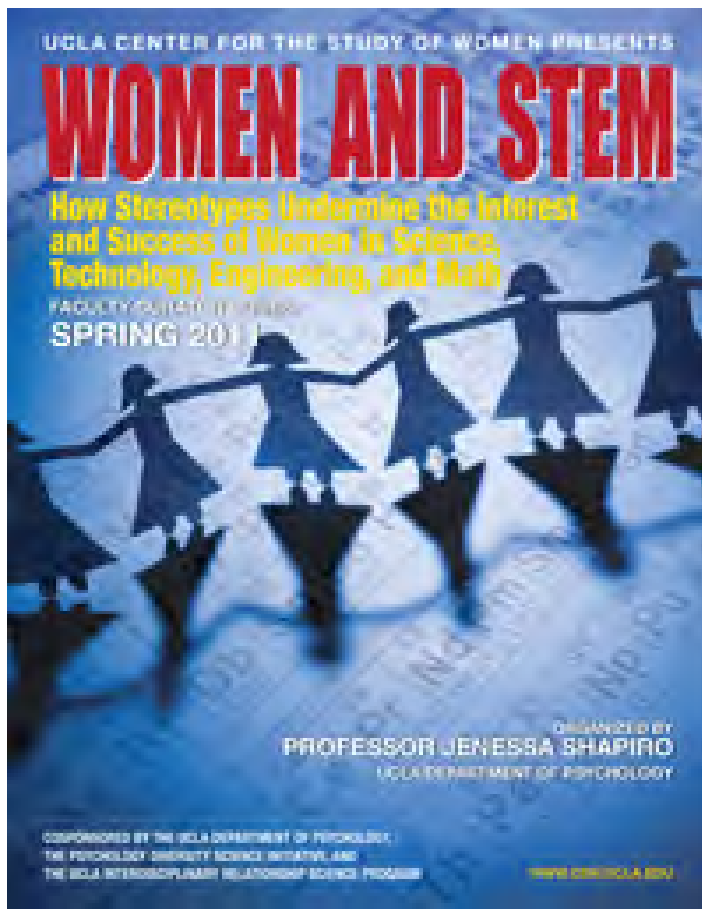
The discussion on both days was very productive and generated a number of insights, including the need for creative administrative strategies founded on the values of autonomy, communication, and collaboration and for policy initiatives that spring from these values. The units involved in New Majorities articulate distinct and protected spaces for speech, research, community, and development. The unique value of these subject areas and units and their contributions to the campus should be communicated to the rest of the campus systematically. These values include: the relevancy and timeliness of course materials and research focus typically cultivated by these units; the development of communities the university would otherwise not cultivate or include; the development of research designs and paradigms used to address research and policy questions unanswerable in the context of traditional disciplines; experience and facility with interdisciplinary research; a familiarity and facility with more flexible and responsive research and curriculum plans than those of traditional departments.

Creative and proactive plans for making the best possible use of these strengths and communicating them to the campus shaped the goals that emerged from this project, which included participants from UCLA exploring the development of a diversity council and working to develop closer relations with units that share research interests but are located in different divisions on campus.

CSW will also investigate publication of the position papers, expansion of research results based on the NYU conference, and a follow-up meeting focused on campuses that have implemented such plans, such as the DISCO group at Ohio State University, at UCLA during AY 11-12.

## C. Progress Report on Goals: Women and STEM

### Women and STEM: How Stereotypes Undermine the Interest and Success of Women in Science, Technology, Engineering and Math



CSW'S FACULTY CURATOR PROGRAM awards faculty competitive grants to curate a speaker's series through CSW. This year, we awarded our first grant to a junior scholar in Psychology, Professor Jenessa Shapiro, who wrote up a detailed report from which some of the following is drawn (Appendix 3). The *Women and STEM* speaker's series, held in Spring 2011, included four distinguished researchers: Professor Steven Spencer (University of Waterloo); Professor Toni Schmader (University of British Columbia); Professor Nilanjana Dasgupta (University of Massachusetts, Amherst); and Professor Joshua Aronson (New York University).

Each speaker is a well-known social psychologist whose research tackles a phenomenon called “stereotype threat,” which looks at how negative stereotypes can undermine women's interest and success in science, technology, engineering, and mathematics (STEM). Not only were the talks engaging but the organized networking opportunities—coffee hours for graduate students, interviews, receptions, and dinners with faculty and staff—were a great benefit to the students, faculty, and staff.

*Broad audience:* Because of the range of attendees, we reached a broad audience and we able to disseminate the work that is being done on this topic. Approximately 100 undergraduate students, graduate students, faculty, and staff attended each talk. In addition, CSW uploaded videos of the talks on the UCLA YouTube channel. Faculty attendees came from UCLA, USC, Loyola Marymount, and other LA-area schools and were from a range of disciplines, including Psychology, STEM fields, Anderson School of Management, Communications, and the Law School. Many staff attendees from UCLA and USC oversee programs for individuals who are underrepresented, either at the university-level (e.g., racial/

## C. Progress Report on Goals: Women and STEM

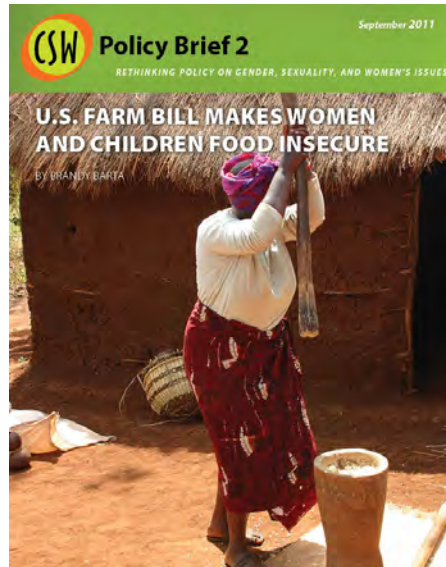
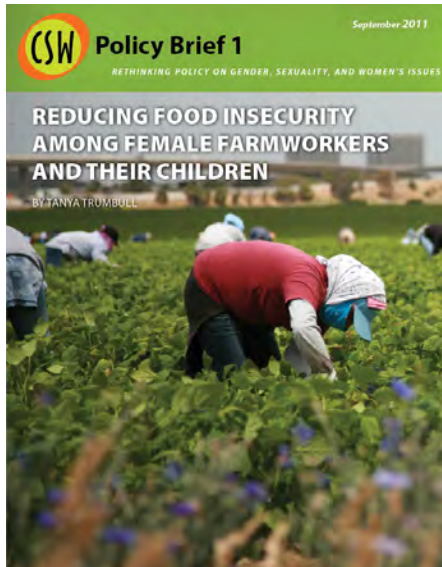
---

ethnic minority students) or in a particular field (e.g., women in STEM). Several reported that they would be able to take information from these talks back to their programs and that they were able to get advice from the speakers regarding how to improve their programs.

*Students from STEM fields:* The student attendees were from many different fields as well, including graduate and undergraduate students from psychology and the STEM fields. The latter were interested in the series because it approached gender disparities in their fields in a nontraditional way. For example, a Latina undergraduate STEM major told us that it gave her a different and extremely valuable perspective. As one of the few women and one of the few Latino/as in her classes, she reported that after learning about stereotype threat, she felt that she had a better sense of how to deal with the additional stressors that go with being the sole member of a particular group (the focus of the Professor Schmader's talk).

*Professional development and networking opportunities:* To facilitate professional development for graduate students, CSW organized a coffee hour, which gave graduate students a chance to meet with each speaker. The participating students were able to get to know the speaker in a more informal setting, which allowed them to make a valuable contact in their field and to practice networking. These coffee hours were initially facilitated by Professor Shapiro, but she found her role became less and less necessary as the students' skills improved with each session. They became more comfortable talking about their own research, more comfortable asking questions, and more self-confident in this academic setting. Many expressed gratitude for this experience because they felt much better prepared for conferences, academic interviews, and other networking situations. In addition, each speaker was interviewed by a UCLA graduate student, and the interviews were published in the CSW newsletter. The after-talk receptions were very well attended by faculty and students, including many from other campus departments, which provided opportunities for cross-campus connections. In fact, two graduate students Earth and Space Science expressed the hope that such talks be organized every quarter. Finally, the dinners that were organized for UCLA faculty were valuable opportunities to engage with each speaker and to initiate further networking.

# C. Progress Report on Goals: Policy Briefs Series



## Policy Briefs Series

**B**ECAUSE IT IS PRESSING ON A GLOBAL, NATIONAL, AND LOCAL LEVEL, CSW selected food security and gender as the theme for the first volume of our new series of publications rethinking public policy on gender, sexuality, and women's issues. Two graduate student researchers working on CSW's WSMALA project prepared briefs based on their research in the area of food security. *Helping Local Stores with WIC Certification Will Yield Better Food Options for All*, by Jackie Hunt, addresses how helping vendors with

## C. Progress Report on Goals: Policy Briefs Series

---

maintaining or attaining WIC certification would improve food offerings for customers and help local economies in a time of economic recession. *Improving Health Outcomes for Households Affected by IPV and Food Insecurity*, by Dayo T. Spencer-Walters, suggests that intimate partner violence and food insecurity are immediate public health and social justice problems that require innovative, multifaceted solutions. *Reinstate Project GROW! Targeting Food Insecurity Among Survivors of Intimate Partner Violence*, by Dayo T. Spencer-Walters, suggests that re-implementing Project GROW would help combat food insecurity among survivors of intimate partner violence.

A generous anonymous donor also provided support for a competitive award program to recognize outstanding applied feminist scholarship by graduate students. We partnered with Michelle Johnson, an Assistant Professor in the Department of Social Welfare and a CSW Faculty Affiliate, in developing a call for graduate student policy brief submissions in the area of “Food In/Security: Local, National, or Global Problems and Solutions.” Several students submitted briefs and three were selected for publication. *Reducing Food Insecurity among Female Farmworkers and their Children*, by Tanya Trumbull, addresses the vulnerability of migrant and seasonal farmworkers in the U.S. A brief by Brandy Barta, *U.S. Farm Bill Makes Women and Children Food Insecure*, suggests how improving the self-sufficiency of developing nations can help to ensure the food security of their women and children. In *Reductions in SNAP Increase Health Risks for Food Insecure Women*, Luis Quintanilla discusses how the re-allocation of safety-net funds will place food insecure women in health deficits. These six policy briefs are being distributed widely to agencies, legislators, and organizations, and will contribute to public dialogue on this vital topic. The policy brief collection is included in Appendix 4.

# C. Progress Report on Goals: Website



## Website

CSW's SOPHISTICATED communications infrastructure and outlets reach the broader scholarly community in our mission areas efficiently and effectively. Our goal of converting the CSW website from an HTML-only editable form to a content management system format, using Plone software, was completed in September of 2010. All of our awards and grants applicants are now able to submit their required documents online, simplifying the submissions process. The new software was key to our ability to gather and analyze results for the New Majorities Survey. At base, the new website is easier to maintain and update as content is developed.



# C. Progress Report on Goals: Newsletter



## Newsletter

OUR HIGHLY REGARDED NEWSLETTER, *CSW Update*, continues to garner much attention online. In the last academic year, this monthly publication attracted 9,775 downloads at the California Digital Library. (See Appendices 5 and 6.) The nine regular issues featured reviews of events, research articles by award recipients, and interviews with faculty grant recipients and visiting speakers. Because of the positive responses from our readers and interest from faculty, students, and research scholars, we published three special issues this year: *Critical Media Literacy: Empowering Students*, edited by Rhonda Hammer, a CSW research scholar and a lecturer in Education/Women’s Studies at UCLA;

## C. Progress Report on Goals: Newsletter and Videocasts



a *CSW Research Scholars Special Issue*; and a *Thinking Gender Special Issue* on CSW's 21st annual graduate research conference.

The *Critical Media Literacy* special issue featured articles by students in Rhonda Hammer's undergraduate/graduate course on "Critical Media Literacy and the Politics of Representation: Theory and Production." Cross-listed in Departments of Women's Studies and Education, the course teaches through the study of scholarly writings, engagement in media analysis, and the creation of media texts. This course is a response to what has been described as a literacy crisis, especially with regard to the diversity of media forums, which mediate our everyday lives. The second special issue that we published highlighted the research and activities of fifteen of the CSW Research Scholars. The articles in this issue describe the vital research produced by scholars in this program, from work on Los Angeles suburbs to organizational/activist research on Los Angeles to topography and environmental issues; from violence in Iraq to women who misbehave; from transnational anti-militarist feminism to how stigma and secrecy operate in disease; from abortion and public health issues in Mexico to historians writing reference works. The third special issue featured panel reviews and papers from this year's *Thinking Gender*, the 21st annual graduate student research conference.

### Videocasts

CSW continues to record and upload videos of talks to the UCLA YouTube Channel. This year, we prepared more than thirty videos from such events as Students and Spirituality event with Helen S. Astin and Chris Littleton; *Thinking Gender*; *Women and STEM*; and *New Majorities*. We also now have a CSW playlist so that all our videos are easily found on the channel. (See Appendix 7.)

# D. Research Teaching and Programming

## 1. Core and Affiliated Faculty

CSW Director, Kathleen McHugh, holds a 33% appointment and the Associate Director holds a 20% appointment. In addition, CSW is guided by an Advisory Committee. Affiliated Faculty hail from all colleges and professional schools in the university.

### ADVISORY COMMITTEE



**Susan Leigh Foster**  
Chair, CSWAC  
Professor, World Arts & Cultures



**Alicia Gaspar de Alba**  
Chair, Chicano/a Studies  
Professor, Chicano/a Studies  
Women's Studies and English



**Rachel Lee**  
Associate Professor, English and  
Women's Studies



**Kathleen McHugh**  
CSW Director; Professor, English  
and Cinema and Media Studies



**Shu-mei Shih**  
Professor, Comparative Literature,  
and Asian American Studies



**Sharon Traweek**  
Associate Professor, History



**Carole Browner**  
Professor in Residence, Psychiatry  
and Biobehavioral Science



**Sondra Hale**  
Professor, Anthropology and  
Women's Studies



**Muriel McClendon**  
Associate Professor, History and  
European Studies



**Anne Mellor**  
Professor, English



**Vivian Sobchack**  
Professor Emerita, Film and TV



**Belinda Tucker**  
Professor, Psychiatry and Behavioral  
Science; Assoc. Dean, Grad Division



**Sue-Ellen Case**  
Professor and Chair,  
Theater Critical Studies



**Elisabeth Le Guin**  
Associate Professor, Musicology



**Kirstie McClure**  
Associate Professor, Political Science



**Felicity Nussbaum**  
Professor, English



**Lara Stemple**  
Director of Graduate Studies  
Program, Law



**Juliet Williams**  
Associate Professor,  
Women's Studies

# D. Research Teaching and Programming

## FACULTY AFFILIATES

### Emily Abel

Professor Emerita,  
Public Health

### Carol Aneshensel

Professor, Public Health and Community  
Health Science

### Helen Astin

Professor Emerita, Education

### Eric Avila

Associate Professor, Chicano Studies  
and History

### Victor Bascara

Associate Professor, Asian American  
Studies

### Janet Bergstrom

Professor, Cinema and Media Studies

### Kathryn Bernhardt

Professor, History

### Maylei Blackwell

Assistant Professor, Chicana/o Studies

### Ruth Bloch

Professor and Vice Chair, History and  
Academic Personnel

### Jennie E. Brand

Assistant Professor, Sociology

### Joseph Bristow

Professor, English

### Karen Brodtkin

Professor Emerita, Anthropology

### Carole Browner

Professor in Residence, Psychiatry and  
Biobehavioral Science

### Lia Brozgal

Assistant Professor, French and  
Francophone Studies

### Greg Bryant

Assistant Professor, Communication  
Studies

### Taimie Bryant

Professor, Law

### Lucy Burns

Assistant Professor, Asian American  
Studies

### Sue-Ellen Case

Professor and Chair, Theater Critical  
Studies

### Jessica Cattelino

Associate Professor, Anthropology

### King-Kok Cheung

Professor, English

### Susan Cochran

Professor, Epidemiology

### Kimberle Crenshaw

Professor, Law

### Lisa Kim Davis

Assistant Professor, Geography

### Esha Niyogi De

Lecturer, Writing Programs

### Elizabeth DeLoughrey

Associate Professor, English

### Robin L.H. Derby

Assistant Professor, History

### Helen Deutsch

Professor, English

### Ellen DuBois

Professor, History

### Christine Dunkel Schetter

Professor, Psychology

### Thelma Estrin

Professor Emerita, Computer Science

### Lieba Faier

Assistant Professor, Geography

### Allyson Nadia Field

Assistant Professor, Cinema and Media  
Studies

### Aisha Finch

Afro American Studies and Women's  
Studies

### Chandra Ford

Assistant Professor, Community Health  
Services

### Susan Leigh Foster

Professor, World Arts and Cultures

### Lorrie Frasure

Assistant Professor, Political Science

### Jodi Friedman

Associate Clinical Professor, Medicine

### Nouri Gana

Assistant Professor, Comp Literature &  
Near Eastern Languages and Cultures

### Alicia Gaspar de Alba

Professor and Chair, Chicana/o Studies

### David Gere

Co-Chair and Associate Professor, World  
Arts & Cultures

### Paola Giuliano

Assistant Professor, Anderson School of  
Management

### Phillip Atiba Goff

Assistant Professor, Psychology

### Andrea S. Goldman

Assistant Professor, History

### Jessica Gipson

Assistant Professor, Community Health  
Services

### Jacqueline Goodchilds

Professor Emerita, Psychology

### Yogita Goyal

Assistant Professor, English

### Patricia Greenfield

Professor, Psychology

### Sondra Hale

Professor, Anthropology and Women's  
Studies

### Sandra Harding

Professor, Social Sciences and  
Comparative Education

### Cheryl Harris

Professor, Law

### Martie G. Haselton

Associate Professor, Communication  
Studies/Psychology

### Katherine Hayles

Distinguished Professor Emerita, English

### Kelly Lytle Hernandez

Associate Professor, History

### Andrew Hewitt

Professor and Chair, Germanic  
Languages

### Frank Tobias Higbie

Associate Professor, History

### Gil Hochberg

Associate Professor, Comparative  
Literature

### Grace Hong

Associate Professor, Asian American  
Studies

### Carolee Howes

Professor, Education

### Yu Huang

Assistant Professor, Materials Science &  
Engineering

### Shirley Hune

Professor Emerita

### Lynn Hunt

Professor, Weber Chair, History and  
French and Francophone Studies

### Margaret Jacob

Professor, History

### Robert Jensen

Associate Professor,  
Public Policy

### Kerri L. Johnson

Assistant Professor, Communication  
Studies

### Michelle Johnson

Assistant Professor, School of Public  
Affairs – Social Welfare

### Sarah Kareem

Assistant Professor, English

### Benjamin R. Karney

Associate Professor, Psychology

### Andrea Kasko

Assistant Professor, Bioengineering/  
Biomedical Engineering

### Cheryl Keyes

Associate Professor, Ethnomusicology

### Katherine King

Professor, Classics and Comparative  
Literature

### Gail Kligman

Professor, Sociology

### Hannah Landecker

Associate Professor, Sociology

### Anna Lau

Associate Professor, Psychology

### Sylvia Lavin

Professor, Architecture and Urban  
Design

### Elisabeth Le Guin

Associate Professor, Musicology

### Jacqueline Leavitt

Professor, Urban Planning

### Gia Lee

Acting Professor, Law

# D. Research Teaching and Programming

## FACULTY AFFILIATES

**Rachel Lee**

Associate Professor, English

**Françoise Lionnet**

Professor, French and Francophone Studies

**Arthur Little**

Associate Professor, English

**Christine Littleton**

Professor and Chair, Law and Women's Studies

**Susanne Lohmann**

Professor, Political Science

**Marissa Lopez**

Assistant Professor, English

**Neil Malamuth**

Professor, Communication Studies and Psychology

**Purnima Mankekar**

Associate Professor, Women's Studies/Asian American Studies

**Elizabeth Marchant**

Associate Professor, Spanish and Portuguese

**Saloni Mathur**

Associate Professor, Art History

**Valerie Matsumoto**

Associate Professor, History

**Vickie Mays**

Professor, Psychology and Health Services; Director, Center on Research, Education, Training and Strategic Communication on Minority Health Disparities

**Susan McClary**

Professor, Music

**Muriel McClendon**

Associate Professor, History; Chair, European Studies Interdepartmental Program

**Kirstie McClure**

Associate Professor, Political Science

**Kathryn McDonnell**

Assistant Professor, Classics

**Patricia McDonough**

Professor and Vice Chair, Education

**Claire McEachern**

Professor, English

**Kathleen McHugh**

Professor, English and Cinema & Media Studies; Director, CSW

**Anne Mellor**

Professor, English

**Sara Melzer**

Associate Professor, French and Francophone Studies

**Claudia Mitchell-Kernan**

Professor, Anthropology

**Mignon R. Moore**

Assistant Professor, Sociology

**Mitchell Morris**

Associate Professor, Musicology

**Amir Mufti**

Associate Professor, Comparative Literature

**Edith Mukudi Omwami**

Asst Professor, Social Sciences and Comparative Education

**Harryette Mullen**

Professor, English

**Laure Murat**

Assistant Professor, French and Francophone Studies

**Barbara Nelson**

Dean and Professor, Public Policy

**Sianne Ngai**

Associate Professor, English

**Kathryn Norberg**

Associate Professor, History

**Chon Noriega**

Prof., Film and Television; Director, Chicano Studies Research Center

**Felicity Nussbaum**

Professor, English

**Frances Olsen**

Professor, Law

**Catherine Opie**

Professor, Art

**Vilma Ortiz**

Associate Professor, Sociology

**Sherry Ortner**

Professor, Anthropology

**Sule Ozler**

Associate Professor, Economics

**Carole Pateman**

Professor, Political Science

**Carol Pavlish**

Assistant Professor, Nursing

**Letitia Anne Peplau**

Professor, Psychology

**Maria Cristina Pons**

Associate Professor, Chicana/o Studies

**Lucia Re**

Professor, Italian

**Janice Reiff**

Associate Professor, History

**Ted Robles**

Assistant Professor, Health Psychology/Sociology

**Karen Rowe**

Professor, English

**Abigail C. Saguy**

Assistant Professor, Sociology

**Linda J. Sax**

Professor, Higher Education and Organizational Change

**Brooke Scelza**

Assistant Professor, Anthropology

**James Schultz**

Professor, Germanic Languages

**Jenessa Shapiro**

Assistant Professor, Psychology

**Jenny Sharpe**

Professor, English

**Margaret Shih**

Associate Professor, Anderson School of Management

**Shu-Mei Shih**

Professor, Asian Languages and Cultures

**Seana Shiffrin**

Associate Professor, Philosophy

**Barbara Sinclair**

Professor Emerita, Political Science

**Susan Slyomovics**

Professor, Anthropology

**Vivian Sobchack**

Professor Emerita, Film and Television

**Zrinka Stahuljak**

Assistant Professor, French and Francophone Studies

**Jennifer Steinkamp**

Professor, Design | Media Arts

**Lara Stemple**

Director of the Graduate Studies Program, Law

**Brenda Stevenson**

Professor, History; Chair, Interdepartmental Program in Afro-American Studies

**Caroline Streeter**

Assistant Professor, English

**Saskia Subramanian**

Asst Research Sociologist, Psychiatry, Biobehavioral Science

**Mariko Tamanoi**

Associate Professor, Anthropology

**Paula Tavrow**

Adjunct Assistant Professor, Public Health

**Shelley Taylor**

Professor, Psychology; Director, Social Neuroscience Lab

**Kevin Terraciano**

Professor, History

**Mary Terrall**

Associate Professor, History

**Katrina Daly Thompson**

Assistant Professor, Applied Linguistics

**Chris Tilly**

Professor, Urban Planning; Director, Institute, Labor and Employment

**Sharon Traweek**

Associate Professor, History

**Belinda Tucker**

Professor, Psychiatry and Behavioral Science; Associate Dean, Graduate Division

**Dawn Upchurch**

Professor, Public Health

**Charlene Villaseñor Black**

Associate Professor, Art History

**Juliet Williams**

Associate Professor, Women's Studies

**Gail Wyatt**

Professor in Residence, Psychiatry and Biobehavioral Science

**Mary Yeager**

Professor, History

**Noah Zatz**

Professor, Law

# D. Research Teaching and Programming

---

## 2. External Funding

### *National Endowment for the Humanities*

National Endowment for the Humanities for “Making Invisible Histories Visible: Preserving the Legacy of Lesbian Feminist Activism and Writing in Los Angeles.” \$300,000.

Awarded: May 2011.

Duration: 3 years.

### *Meridel Le Sueur Fund*

Meridel Le Sueur Fund (Anonymous Donor) for “Women’s Social Movement Activities in Los Angeles.” \$100,000.

Awarded September 2008.

Duration: 5 years.

### *Irving and Jean Stone*

Irving and Jean Stone (Bequest) for graduate fellowships, recruitment dissertation, and graduate student research innovation fund.

\$2,000,000 endowment.

### *University of California Humanities Research Institute*

University of California Humanities Research Institute for “New Majorities, Shifting Priorities: Difference and Demographics in the 21<sup>st</sup> Century Academy.” \$2000.

Awarded December 2010.

Duration: 1 year.

For a list of all external funds, please see Appendix 8.

# D. Research Teaching and Programming

## 3.Scholarly and Instructional Activities

This year we maintained our reputation for producing high quality lectures, conferences and workshops. In addition to the New Majorities conference and Faculty Curator Series, detailed above, we sponsored, and cosponsored, numerous events throughout the year.

### Events

DATE	SERIES/ THEME	TITLE OF TALK	NAME OF SPEAKER	SPEAKER'S AFFILIATION	COSPONSORS	ATTENDANCE	CSW ORIGINATED?
09/15/10	Research Scholars Luncheon	Research Scholars Luncheon	n/a	n/a		30	Yes
09/16/10	Graduate Student Initiative	Grad Student Workshop – Dissertator Meeting	Kathleen McHugh	CSW Director		7	Yes
10/05/10	Fall Reception	Fall Reception	Kathleen McHugh, Chris Littleton,	CSW, Women's Studies	Department of Women's Studies	120	Yes
10/8/10 & 10/9/10	Cosponsored Event	Queer Studies Conference	Kara Keeling, Asfaneh Najmabadi, Gayle Salamon, Susan Stryker		LGBT Studies, The Williams Institute	200	No
10/09/10	Cosponsored Event	The Role of Ideology in Iran from the 1979 Revolution to the 2009 Green Movement	Mehrangiz Kar, Fatemeh Haghhighatjoo, Hamid Dabashi, Kaveh Ehsani, Annabelle Srberney-Mohammadi, Mohsen Kadivar	Various	Iranian Graduate Students' Association in the Humanities and Social Sciences (UCLA); UCLA Department of Comparative Literature; UCLA Center for Near Eastern Studies; The Iranian Studies Program at UCLA; UCI's Samuel Jordan Center for Persian Studies and Culture; The Office of Religious Life at USC	31	No
10/19/10	Critical Media Literacy Screening	Critical Media Literacy Screening	Rhonda Hammer	CSW, UCLA Women's Studies and Education		17	Yes
11/02/10	Graduate Student Initiative	Grad Student Workshop – Interview Success	Ally Fields and Aisha Finch	UCLA Women's Studies and Cinema and Media Studies		29	Yes
11/03/10	Cosponsored Event	Trans/Formations: Scholarship and Performances of Change	Micha Cardenas and Elle Mehrmand	CRCA Experimental Game Lab	Center for Performance Studies, LGBT Studies, Department of Spanish and Portuguese	60	No
11/10/10	Cosponsored Event	Trans/Formations: Scholarship and Performances of Change	Sor Juana Review – Jesusa Rodriguez and Alicia Gaspar de Alba	Department of Chicano/Chicana Studies	LGBT Studies, Department of Spanish and Portuguese	60	No

# D. Research Teaching and Programming

DATE	SERIES/ THEME	TITLE OF TALK	NAME OF SPEAKER	SPEAKER'S AFFILIATION	COSPONSORS	ATTENDANCE	CSW ORIGI-NATED?
11/16/10	Cosponsored Event	Ms Magazine Site Visit	Kathy Spillar		Women's Studies	6	No
11/29/10	Cosponsored Event	Extended families made for science: gendered ways of sharing scientific work in early 20th century Sweden	Staffan Bergwik	Uppsala University		16	No
12/08/10	Senior Faculty Feminist Seminar	Students and Spirituality	Dr. Helen Astin and Dr. Christine Littleton	UCLA Educa-tion, Office of Diversity and Faculty Development		62	Yes
01/06/11	Senior Faculty Feminist Seminar	Exploring Dutch Diaspora Space	Dr. Gloria Wekker	Utrecht University	Grad Division	9	Yes
01/10/11	Cosponsored Event	Anticipatory Governance, Queer Difference and the Emirati Post-Oil Generation	Dr. Noor Al-Qasimi	Kings College, London	UCLA Center for Near Eastern Studies	20	No
01/12/11	Emerging Episte-mologies Workshop	Emerging Epistemologies- Lisa Kim Davis	Lisa Kim Davis and Nancy Abelmann	UCLA Geology		10	Yes
1/13/11	Cosponsored Event	The Crank: Screening of Lady in the Dark	n/a	n/a	Department of Cinema and Media Studies	40	No
01/19/11	Cosponsored Event	Tami Kremer-Sadlik, UCLA Center on the Everyday Life of Families (CELF)	Chris Tilly		Urban Planning, Inst. For Res. On Labor & Employment	10	No
01/27/11	Cosponsored Event	Lori Meeks' Hokkeji and the Reemergence of Female Monastic Orders in Pre-modern Japan	Lori Meeks and Karen Derris	USC and Redlands University	Center for the Study of Religion, Center for Buddhist Studies	29	No
02/02/11	Faculty Luncheon	Professor Vicki Shultz Luncheon	Vicki Shultz			14	Yes
2/10/11	Cosponsored Event	Once Upon a Time in the Present	Dr. Lata Mani		UCLA Postcolonial Theory Group, UCLA "Cultures in Transnational Perspec-tive" Mellon Postdoctoral Program in the Humanities	30	No
02/10/11	Cosponsored Event	GENESIS Project as a Model of Gender Study Research	Oksana Chepelyk	UCLA Design I Media Arts	UCLA DMA, the Fulbright Program, UCLA Art I Sci Center	40	No
02/11/11	Thinking Gender Conference	Thinking Gender Conference				300	Yes
02/17/11	Cosponsored Event	Frances Marion and the Powerful Women of Hol-lywood	Dr. Cari Beauchamp		Cinema and Media Studies Program, Dept. Film, TV, DM	17	No



# D. Research Teaching and Programming

DATE	SERIES/ THEME	TITLE OF TALK	NAME OF SPEAKER	SPEAKER'S AFFILIATION	COSPONSORS	ATTENDANCE	CSW ORIGI-NATED?
02/24/11	Cosponsored Event	Mothers without Citizen-ship, Asian Immigrant Families and the Consequences of Welfare Reform in 2008	Dr. Lynn Fujiwara	University of Oregon	Department of Asian American Studies	42	No
02/24/11	Cosponsored Event	Why History Matters: Same Sex Marriage: Past, Present and Future	David Boies, Nancy Cott, Ellen DuBois, M. V. Lee Badgett		UCLA Department of History, The Williams Institute, UCLA LGBT Resource Center	200	No
03/03/11	Cosponsored Event	The Crank: Screening of Madonna: Truth or Dare	n/a	n/a	UCLA Department of Cinema and Media Studies	55	No
03/04/11 & 03/05/11	New Majorities, Shifting Priorities	New Majorities, Shifting Priorities Conference	Various	Various		78	Yes
03/06/11	Cosponsored Event	Claudia Jones: Caribbean Pioneer of Black Radical Feminism	Marika Sherwood Institute of Commonwealth Studies, University of London		History	50	No
03/28/11	Cosponsored Event	New Reproductive Technologies and Emerging Moral Vocabularies: An Agenda for Studying Technologies-in-Action	Dr. Sigal Gooldin	Hebrew University of Jerusalem	Ray Ross, Department of Sociology, Sociology of Family Working Groups	10	No
03/31/11	Cosponsored Event	Critical Race Studies Symposium: Race and Sovereignty -Hearing Radmilla Screening	Mishuana Goeman and Radmilla Cody		Department of Women's Studies, UCLA School of Law	60	No
04/11/11	Works In Progress Series	Canaries in the Coal Mine	Dr. Jennifer Doyle	University of California, Riverside		15	Yes
04/21/11	Faculty Curator – Women in STEM	A Chilly Climate for Women in STEM: How It Develops and How It Can Be Overcome	Dr. Steven Spencer	University of Waterloo	UCLA Department of Psychology, the Psychology Diversity Science Initiative, and the UCLA Interdisciplinary Relationship Science Program	49	Yes
04/28/11	Faculty Curator – Women in STEM	Stereotype Threat Deconstructed	Dr. Toni Schmader	University of British Columbia	UCLA Department of Psychology, the Psychology Diversity Science Initiative, and the UCLA Interdisciplinary Relationship Science Program	59	Yes
04/29/11	New Majorities, Shifting Priorities II	The Multiple Futures of Gender & Sexuality Studies	Various	Various	NYU Gender and Sexuality Studies Program, and the Office of LGBT Student Service	225	Yes
05/02/11	Cosponsored Event	Filipino American Writers and their New Novels	Jessica Hagedorn and R. Zamora Linmark		Department of Asian American Studies, Mellon Foundation's Transnational Studies	75	No
05/05/11	Cosponsored Event	Is legalization enough? A international examination of abortion preferences	Dr. Davida Becker	CSW Research Scholar	Bixby Center on Population and Reproductive Health	21	No
05/12/11	Faculty Curator – Women in STEM	STEMing the tide: Female experts and peers enhance young women's interest in science, technology, engineering, and mathematics	Dr. Nilanjana Dasgupta	University of Massachusetts, Amherst	UCLA Department of Psychology, the Psychology Diversity Science Initiative, and the UCLA Interdisciplinary Relationship Science Program	48	Yes

# D. Research Teaching and Programming

DATE	SERIES/ THEME	TITLE OF TALK	NAME OF SPEAKER	SPEAKER'S AFFILIATION	COSPONSORS	ATTENDANCE	CSW ORIGI-NATED?
05/12/11	Cosponsored Event	Media Images and Screen Representations of Nurses	Joseph Turow, PhD and Sandy Summers, RN, MSN, MPH		UCLA School of Nursing, UCLA Chapter of the American Assembly for Men in Nursing	130	No
05/12/11-05/15/11	Cosponsored Event	GLBT Archives; Libraries, Museums and Special Collections Conference	ALMS		June L. Mazer Lesbian Archives, City of West Hollywood, UCLA Library	285	No
05/19/11	Faculty Curator – Women in STEM	Stereotypes and the Nurture of Intelligent Thought and Behavior	Dr. Joshua Aronson	New York University	UCLA Department of Psychology, the Psychology Diversity Science Initiative, and the UCLA Interdisciplinary Relationship Science Program	54	Yes
06/02/11	New Faculty Reception	New Faculty Reception	n/a	n/a	Office of Diversity and Faculty Development	17	Yes
06/07/11	Awards Luncheon	Awards Luncheon	n/a	n/a		45	Yes
06/24-06/25/11	Graduate Student Initiative	Grad Student Workshop – Dissertation Writing Retreat				14	Yes

## *Graduate Student Initiative*

CSW provides research support to graduate students through a number of different programs, research projects, awards and grants, as well as providing training and professionalization opportunities. We have systematized all the support we provide under a program called the CSW Graduate Student Initiative.

CSW's annual graduate student research conference, *Thinking Gender* (Appendix 9), in its 21<sup>st</sup> year, provided 84 graduate students with an opportunity to present their work and receive detailed remarks from engaged moderators. Nearly double that number of participants attended the conference this year to learn more about new directions in the study of women, gender, and sexuality. Downloads of these graduate student papers through the California Digital Library continue to be very popular with 15,799 downloads in the past academic year alone (see Appendix 5.) The stipend provided to the Conference Coordinator, Jennifer Moorman, was funded by the Graduate Division, and provided her with valuable skills in submission management and selection, scholarly communication, conference logistics, and general organization.

Our generous donors have provided CSW with the means to offer graduate students an array of award, grant, and fellowship opportunities. CSW provides

## D. Research Teaching and Programming

---

awards for dissertation and scholarly excellence, fellowships for research, and a competitive bianual travel grant program. Altogether, CSW provided funds to 24 students, ranging from \$300 to \$33,000. For a full list of awards, recipients, and short descriptions of recipients' projects, see Appendices 10 and 11.

CSW's graduate student awards and grants are highly competitive and we solicit faculty to serve on these committees to maintain the integrity of the process. Faculty find this service work to be rewarding and frequently accept our offers to attend the Annual Awards Luncheon in June to meet the recipients of the awards they judged. (Appendix 12.)

CSW also organizes writing groups and retreats for dissertation writers whose work falls in our mission areas. Four groups of dissertators met regularly throughout the academic year, both on campus and off, to provide support and motivation in the writing process. Participant Cristina Rosa, an Irving and Jean Stone Dissertation Scholar, wrote, to Director McHugh: "I am writing to share the good news: I just filed my dissertation last month and I am taking a moment to thank each and every one who made a contribution to my project. In particular, I would like to thank you, and the Center for the Study of Women, for the vote of confidence and for setting up our writing group. I am certain that I could not have completed this huge project without your welcoming structure of support. Please be sure to count on me in the years to come." These writing groups grew out of our AY 09-10 Writing Retreat, a two-day dissertation writing lockdown held at UCLA in June 2010. This year, we expanded the retreat to two and a half days. Ten writers spent a long weekend in the early summer working on their projects; all made significant progress toward their goals. Some made it past cumbersome writing blocks while others completed entire dissertation chapters. In an online survey, all rated the retreat as very favorable. See Appendix 13 for the complete comments, including descriptions of what students accomplished during the retreat.

### *Visiting Scholars*

The CSW Research Scholars are Los Angeles-based independent and/or public intellectuals publishing on topics pertaining to gender, sexuality, and women's issues. This program gives CSW a connection to the feminist intellectual community in Los Angeles and gives these scholars a connection to UCLA. In AY 10-11, we hosted 35 scholars (Appendix 14.) Their academic work is detailed in the following sections.

# D. Research Teaching and Programming

## 4. Publications Generated as a Result of CSW activity

IN ADDITION TO THE MONTHLY NEWSLETTER featuring research reports by UCLA faculty and graduate students (see Appendix 5), our faculty development grants enable junior, as well as senior, faculty to begin and complete scholarly work. We awarded eight faculty development grants this year and expect to see the products of those grants come to fruition in the next few years. See Appendix 15 for a full list of recipients and descriptions of their projects.

### *Publications from CSW Faculty Development Grants*

These faculty articles, books, and presentations (B = book, C = book chapter, J = journal article, P = presentation or conference paper) were made possible by past CSW faculty development grants.

- Blackwell, Maylei. (2011) Chicana Power! in *Contested Histories of Feminism in the Chicano Movement*. Austin, TX: University of Texas Press. (B)
- Brooks, K. P., & Dunkel Schetter, C. (2011) Social negativity in *Social and Personality Psychology Compass* [in press]. (J)
- Brooks, K. P., Robles, T. F., & Dunkel Schetter. (2011) Adult attachment and cortisol responses to discussions with a romantic partner. in *Personal Relationships*. [in press]. (J)
- Dunkel Schetter, C. & Lobel, M. (2011) Pregnancy and birth: A multi-level analysis of stress and birthweight in *Handbook of Health Psychology* (2nd edition), T. Revenson, A. Baum & J. Singer (Eds.). [in press]. (C)
- Dunkel Schetter, C. & Robbins, C. (2011) Pregnancy anxiety: Concept, measures, correlates and predictors presented in symposium on Developmental Consequences of Prenatal Stress and Anxiety at Western Psychological Association meetings, Los Angeles, April 2011. (P)
- Dunkel Schetter, C. (2011) Resilience: A Stress full concept presented at Invited International Conference on Health Psychology of Chronic Illness. Coromandel Peninsula, New Zealand, April 2011.(P)
- Dunkel-Schetter, C. & Glynn, L. (2011) Stress in pregnancy: Empirical evidence and theoretical issues to guide interdisciplinary researcher in *The Handbook of Stress Science*, pp. 321-343, R. Contrada & A. Baum (Eds). New York, NY: Springer Publishing Company, 2011. (C)
- Dunkel Schetter, C. (2010) Psychological science on pregnancy: Stress processes, biopsychosocial models, and emerging research issues in *Annual Review of Psychology*, 62, 531-558. (J)
- Abdou, C., Dunkel-Schetter, C., Campos, B., Hilmert, C.J., Parker Dominguez, T., Hobel, C.J., Glynn, L.M., & Sandman, C. (2010) Communalism predicts prenatal affect, stress, and physiology better than ethnicity and socioeconomic status in *Cultural Diversity and Ethnic Minority Psychology*, 16(3), 395-403. (C)
- Rini, C. & Dunkel Schetter, C. (2010) The effectiveness of social camsupport attempts in intimate relationships: ‘T ain’t what you do, it’s the way that you do it’ in *Support Processes in Intimate Relationships*, pp. 26-70, K. Sullivan & J. Davila (Eds.), New York, NY: Oxford University Press. (C)
- Abdou, C. M., Dunkel Schetter, C., Roubinov, D., Jones, F., Tsai, S., Jones, L., Lu, M., & Hobel, C. (2010) Community perspectives: Mixed-methods investigation of culture, stress, resilience, and health in *Ethnicity and Disease*, 20, S2-41-S2-48. (J)
- Dunkel Schetter, C. & Yim, I. (2010) Risk factors for postpartum depression: The need for integrative research, American Psychological Association Annual Convention in San Diego, CA, August 2010. (P)

# D. Research Teaching and Programming

---

- Tanner, L., & Dunkel Schetter, C. (2010) Partner support and relationship satisfaction in postpartum depression and anxiety, American Psychological Association Annual Convention in San Diego, CA, August 2010. (P)
- Dunkel Schetter, C. (2010) Stress in pregnancy and birth outcomes: Biopsychosocial advances, American Psychosomatic Society meeting, Symposium on Prenatal Processes in Portland, OR, March 2010. (P)
- Eidsheim, Nina Sun (2011) Marian Anderson and 'sonic blackness' in American opera." *American Quarterly Special Issue Volume 63:3* [in press]. (J)
- Eidsheim, Nina Sun and Mandy-Suzanne Wong (2011) Corporeal archaeology: embodied memory and improvisation in *Corregidora and Contemporary Music* in *Sounding the Body: Improvisation, Representation, and Subjectivity*, Gillian Siddall and Ellen Waterman (eds) [in press]. (C)
- Eidsheim, Nina Sun (2011) Sensing voice: materiality and presence in singing and listening in *The Senses & Society*, 6 (2). (J)
- Goldman, Andrea (2011) *Opera and the City: The Politics of Culture in Beijing, 1770-1900*. [in press, Stanford University Press]. (B)
- Goldman, Andrea (2011) Melodrama, gender, and politics in nineteenth-century commercial Kun opera, Center for Asian Studies, University of California, Irvine on April 8, 2011. (P)
- Goldman, Andrea (2010) Social melodrama and the sexing of political complaint in nineteenth-century commercial Kun opera, University of Washington China Colloquium on October 28, 2010. (P)
- Manago, Adriana and Patricia Greenfield (2011) The construction of independent values among Maya women at the forefront of social change: four case studies in *Etho* 39(1), 1-29. (J)
- Haselton, M. G. & Gildersleeve, K. (2011) Can men detect ovulation? In *Current Directions in Psychological Science*, 20, 87-92. (J)
- Lieberman, D., Pillsworth, E. G., & Haselton, M. G. (2011) Kin affiliation across the ovulatory cycle: females avoid fathers when fertile in *Psychological Science*, 22, 13-18. (J)
- Haselton, M. G. (2011) Ovulation and human social behavior, Evolution and Cancer Conference at the Evolution and Cancer Center, University of California, San Francisco in June 2011. (P)
- Haselton, M. G. (2011) Can men detect ovulation?, Fifth Annual California Workshop on Evolutionary Perspectives on Human Behavior at the California Polytechnic University, San Luis Obispo, at the Jacob Marschak Interdisciplinary Colloquium on Mathematics in the Behavioral Sciences at UCLA, and at the SIRE Evolution Conference at California State University, Fullerton in May 2011. (P)
- Haselton, M. G. (2010) Evolutionary Esthetics, Conference on Bio-Art, The Museum of Contemporary Art in November 2010. (P)
- Haselton, M. G. (2010) Her time: changes in women's desire and attractiveness in the fertile window of the menstrual cycle, Relationships Preconference for the Society of Experimental Social Psychology in Minneapolis, Minnesota in October 2010. (P)
- Mann, Denise (2010) Next gen web workers: LG15's industrial self-reflexivity on steroids in the *Journal of Popular Film and Television* 38,2: 89-94. (J)
- Mathur, Saloni (2011) Charles and Ray Eames in India in *Art Journal*. 70(1), pp. 34-53. (J)
- Mathur, Saloni (2011) Charles and Ray Eames in India, 20th Annual McGinn Lecture at the Department of Art History, UCLA on March 8, 2011 and at the Getty Research Institute in Los Angeles, CA on January 31, 2011. (P)
- Moore, Mignon (2011) Intersectionality and the study of black sexuality and family formation in *Gender & Society* [in press]. (J)
- Moore, Mignon and Amy Brainer (2011) Race and ethnicity in the lives of sexual minority parents and their children in *LGBT-Parent Families: Possibilities for New Research and Implications for Practice*, A. Goldberg and K. Allen (eds), NY: Springer [in press]. (C)

## D. Research Teaching and Programming

---

- Moore, Mignon (2011) *Invisible Families: Gay Identities, Relationships and Motherhood among Black Women*. Berkeley: University of California Press. (B)
- Moore, Mignon (2011) Two sides of the same coin: revising analyses of lesbian sexuality and family formation through the study of black women in *Journal of Lesbian Studies*, 15, 1: 58-68. (J)
- Moore, Mignon (2011) Sexual diversity: class, race and ethnic perspectives, Council on Contemporary Families Annual Conference in Chicago IL in April 2011. (P)
- Moore, Mignon (2011) Marriage and family scholars thinking about LGBT families, 10<sup>th</sup> Annual Update Conference for the Williams Institute on Sexual Orientation Law and Policy at the UCLA School of Law in April 2011. (P)
- Moore, Mignon (2010) Invisible families: a mixed-methods study of gay identities, relationships and motherhood among black women, DePaul University Center for Black Diaspora in October 2010, at the University of Missouri Department of Human Development and Family Studies in October 2010, at the UCLA Sloan Center on Everyday Life of Families in Apr 2010, at the University of Memphis Bryant Memorial Lecture, Dept. of Women's and Gender Studies in March 2010, and at the University of Texas-Austin Department of Sociology in February 2010. (P)
- Oak, Sung-Deuk (2011) *Sources of History of Nursing in Korea, Volume 1, 1885-1911*. Korean Nurses Association Publishing. (B)
- Pavlish, C., Ho, A., & Rounkle, A (2011) A call for health and human rights advocacy: perspectives from a refugee camp in Rwanda in *Nursing Ethics* [in press]. (J)
- Pavlish, C (2011) Nurses as health and human rights advocates, International Council of Nurses Conference in Valletta, Malta in May 2011. (P)
- Ho, A., & Pavlish, C. (2011) Indivisibility of accountability and empowerment in tackling gender-based violence: lessons from a refugee camp in Rwanda in the *Journal of Refugee Studies*, 24(1): 88-109. (J)
- Scelza, B.A. (2011) Female mobility and post-marital kin access in a patrilocal society in *Human Nature* [in press]. (J)
- Scelza, B.A. (2011) Female choice and extra-pair paternity in a traditional human population in *Biology Letters* doi: 10.1098/rsbl.2011.0478. (J)
- Straub, Whitney (2011) *Perversion for Profit: The Politics of Pornography and the Rise of the New Right*, Columbia University Press. (B)
- Tamayose, Beth & Takahashi, Lois (2011) *The rise of western land and water regulation on the Hawaiian islands: an historical analysis of land, property, and water governance, 1840s-1910s* [in press].(B)
- Takahashi, Lois & Beth Tamayose (2011) Legal geographies of land in the US Pacific Islands: historical analyses of indigeneity, gender, and class, Annual Meeting of the Association of American Geographers, Washington DC, 2011. (P)
- Thompson, Katrina Daly (2011) Zanzibari women's discursive and sexual agency: violating gendered speech prohibitions through talk about supernatural sex in *Discourse & Society* 22:1 (January 2011): 3-20. (J)
- Thompson, Katrina Daly (2010) Discreet talk about supernatural rape, queer identities, and male same-sex corporeal intimacy in Zanzibar (Unguja), African Studies Association (ASA) 2010 Annual Meeting, San Francisco, CA on November 19, 2010. (P)
- Williams, Juliet (2011) Masculinities beyond intersectionality?, Multidimensional Masculinities Symposium at the University of Nevada, Las Vegas School of Law. (P)
- Williams, Juliet (2010) Pedagogies of masculinity, Reconstructing Masculinities Symposium at the Harvard Law School. (P)
- Williams, Juliet (2010) Learning differences: sex-role stereotyping in single-sex public education in the *Harvard Journal of Law and Gender* 33 (2): 555-580. (J)

# D. Research Teaching and Programming

---

## *Publications by CSW Research Scholars*

One of the simple, yet important, reasons that research scholars need CSW support is in order to make use of the resources of the UCLA Library. An appointment as a CSW Research Scholar enables their access as a library patron. In addition, a grant from an anonymous donor provides up to three \$750 research grants to CSW Research Scholars each year. See Appendix 16 for a list of this year's recipients. With all of this support, the following articles, books, and presentations (B = book, C = book chapter, J = journal article, P = presentation or conference paper) were made possible in AY 10-11.

- Arbabzadah, Nushin (2011) *Letters to My Torturer by Houshang Assadie*. Translated from Farsi by Nushin Arbabzadah. [in press, One World Publications]. (B)
- Becker D, et al (2011) Client's perceptions of the quality of care in Mexico City's public sector legal abortion program in *International Perspectives on Sexual and Reproductive Health* [in press]. (J)
- Gipson J, Becker D, Mishtal J, Norris A. (2011) Conducting collaborative abortion research in international settings in *Women's Health Issues*, 2011, 21(3 Suppl), S58-S62. (J)
- Norris A, Bessett D, Steinberg JR, Kavanaugh ML, De Zordo S, Becker D. (2011) Abortion stigma: a reconceptualization of constituents, causes and consequences in *Women's Health Issues*, 2011, 21(3 Suppl) S49-S54. (J)
- Becker D, et al (2011) Socio-demographic factors associated with obstacles to abortion care: findings from a survey with abortion patients in Mexico City in *Women's Health Issues*, 2011, 21(3 Suppl), S16-S20. (J)
- Steinberg JR, Becker D, Henderson JT. (2011) Does the outcome of a first pregnancy predict depression, suicidal ideation, or low self-esteem in the *American Journal of Orthopsychiatry*, 2011, 81(2): 193-201. (J)
- Harper CC, Henderson JT, Schalet A, Becker D, Stratton L, Raine TR. (2010) Abstinence and teenagers: prevention counseling practices of health care providers serving high-risk patients in the United States in the *Perspectives on Sexual and Reproductive Health*, 2010, 42(2):125-132. (J)
- Dexter, Miriam Robbins (2011) Queen Medb and the sovereignty of Ireland in *Goddesses in World Culture Series, Volume 2, Eastern Mediterranean and Europe*, Patricia Monaghan (ed.), Santa Barbara, California: Praeger 2011:225-239. (C)
- Dexter, Miriam Robbins and Victor H. Mair (2010) *Sacred Display: Divine and Magical Female Figures of Eurasia*. Amherst, New York: Cambria Press. (B)
- Dexter, Miriam Robbins, Joan Marler, and Adrian Poruciuc (eds). *Prehistoric Roots of Romanian and Southeast European Traditions*. Sebastopol, California: Institute of Archaeomythology. 2010. (B)
- Dexter, Miriam Robbins (2010) The Danube Script and the old European goddess: the intersection of language, archaeology, and religion in *The Journal of Archaeomythology*, 6:41-50. (J)
- Dexter, Miriam Robbins (2010) The ferocious and the erotic: 'beautiful' Medusa and the Neolithic bird and snake in the *Journal of Feminist Studies in Religion*, 26.1:25-41. (J)
- Elsesser, Kim (2010) And the gender-neutral Oscar goes to... in the *The New York Times*, March 4, 2010, p. A27. (J)
- Feinstein, Margaret Myers (2010) *Holocaust Survivors in Postwar Germany, 1945-1957*, Cambridge University Press.
- Gifford, Lindsay (2011) *City of Jasmine: Everyday Experience in Contemporary Damascus*. [in press, University of Texas Press]. (B)

# D. Research Teaching and Programming

---

- Gifford, Lindsay (2011) Religious civility in multisectarian Syria in *Etology* [in press]. (J)
- Ginoza, Ayano (2011) Mobilizing indigenities in Okinawa as a resistance to U.S. militarism in *Legacies of Pacific Island Militarization* [in press]. (C)
- Ginoza, Ayano. (2011) Contemporary indigenism and social movements in Okinawa: an analysis of *Sit in on the Sea* in *International Journal of Okinawan Studies* [in press]. (J)
- Ginoza, Ayano (2011) Okinawanness as a form of indigeneity in transnational anti-militarist feminist movement in the *UCLA Center for the Study of Women Newsletter Special Issue Part I*, pp. 19-22. (J)
- Hammer, Rhonda. (2011) Critical media literacy as engaged pedagogy in the *Journal of E-Learning and Digital Media* [in press]. (J)
- Hammer, Rhonda (2010) Introduction to special issue on critical media literacy: where theory meets practice in the *UCLA Center for the Study of Women Newsletter: Special Edition* (2010:4-13). (J)
- Hant, Myrna (2011) A history of Jewish mothers on television: decoding the tenacious Stereotype in *The Journal of Interdisciplinary Feminist Thought*. (J)
- Hant, Myrna (2010) TV Jewish mothers: the creation of a multiethnic antiheroine in *Taboo* (reprint chosen for importance to cultural studies). (J)
- Hant, Myrna (2010) Judaism and motherhood in *Encyclopedia of Motherhood*. (C)
- Hant, Myrna (2010) Jewish mothers in *Encyclopedia of Motherhood*. (C)
- Hant, Myrna (2010) Jewish Americans: the eighties (1980-1989) in *Multicultural America: A Social and Cultural History*. (C)
- Hant, Myrna (2010) Women in society, changing roles 1961 to present in *Celebrating Women in American History*. (C)
- Kohpahl, Gabriele (2011) *The Political Struggles of Dream Act Students in the United States*. [in press, New York University Press]. (B)
- Kohpahl, Gabriele (2011) Aging on the US/Mexico border: Mexican widows and US social security benefits in *Anthropology Today* [in press]. (J)
- Lipkin, Elline (2011) Alice Notley” in *American Women Poets in the 21st Century*, Claudia Rankine and Lisa Sewall (eds) [in press, Wesleyan Press]. (C)
- Lipkin, Elline (2011) Mutanabbi Street in *Baghdad Anthology* [in press, Red Hen Press].
- Lipkin, Elline. (2011) Something borrowed, something blue: what’s an indie bride to do? in *Fashion Talks: Undressing the Power of Style*, Shira Tarrant and Marjorie Jolles (eds). SUNY Press. (C)
- Lipkin, Elline (2011) The active blank: what words can’t tell us in *Mentor & Muse: Essays from Poets to Poets*, Southern Illinois University Press. (C)
- Maynard-Tucker, Gisele (2011) The invisible challenge to HIV/AIDS prevention: clandestine prostitution in Senegal in the *Journal of International Women’s Studies* [in press]. (J)
- Nusbaum, Juliet (2010) Imagining the landscape in *Lavorare stanca*, Incontro per la celebrazione della nascita di Cesare Pavese at San Francisco State University on October 24–25, 2010. (P)
- Price, Jenny (2010) *The Devil’s Punchbowl: A Cultural & Geographic Map of California Today*, Red Hen Press. (B)
- Richards, Penny L. (2011) But what about the rest of us? in *Social and Cultural Geography* [in press]. (J)
- Richards, Penny L. (2011) Paul Kenneth Longmore, 1946-2010 in *Perspectives on History: The News-magazine of the American Historical Association* [in press]. (J)
- Roman, Denise (2011) Behind the rape shield: a historical and comparative perspective on the Rape Shield Laws, Women’s Studies International Forum in 2011. (P)
- Sheldon, Kathleen and Isabel Fêo P.B. Rodrigues (2010) Cape Verdean and Mozambican women’s literature: liberating the national and seizing the intimate in *African Studies Review* 53(3) December 2010:7-99. (J)



## D. Research Teaching and Programming

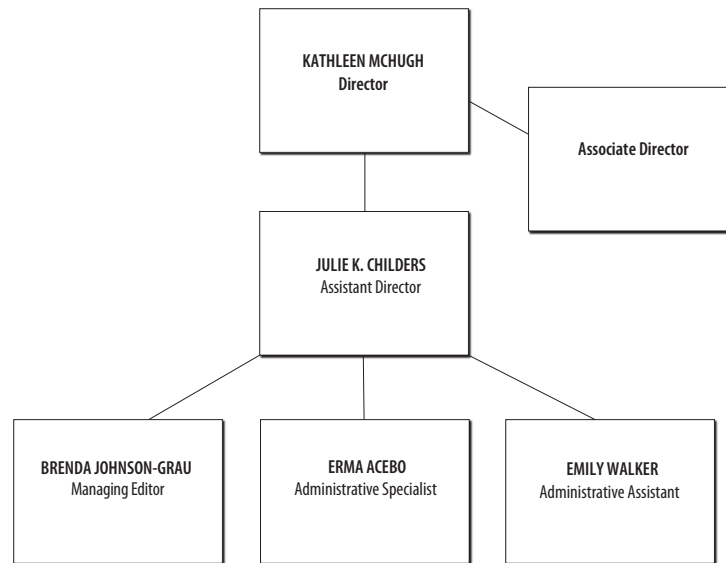
---

- Sheldon, Kathleen, John Middleton, Joseph C. Miller (Eds) 2010. *New Encyclopedia of Africa*, 2nd ed., 5 vols. (B)
- Sheldon, Kathleen (2010) *Historical Dictionary of Women in Sub-Saharan Africa*. Re-issued in paperback as *The A to Z of Women in Sub-Saharan Africa* (Methuen, N.J.: Scarecrow Press). (B)
- Sheldon, Kathleen (2010) 'No more cookies or cake now, "c'est la guerre": an American nurse in Turkey, 1919 to 1920 in *Social Sciences and Missions* 23, 1: 94-123. (J)
- Sheldon, Kathleen (2010) Creating an archive of working women's oral histories in Beira, Mozambique in *Contesting Archives: Finding Women in the Sources*, Nupur Chaudhuri, Sherry J. Katz, and Mary Elizabeth Perry (eds) Champaign-Urbana: University of Illinois Press, pp. 192-210. (C)
- Sheldon, Kathleen (2010) Mozambique in *Berg Encyclopedia of World Dress and Fashion vol. 1*, Joanne Eicher (ed) pp. 496-500. (C)
- Rader, N. de V. & Zukow-Goldring, P. (2011) Caregivers' gestures direct infant attention during early word learning: the importance of dynamic synchrony in *Caring and conversing: The distributed dynamics of dialogue*, B Hodges, J. Martin, & S. Steffensen (eds), [in press]. (C)
- Zukow-Goldring, Patricia (2011) Assisted imitation: first steps in the SEED model of language development in *Caring and conversing: The distributed dynamics of dialogue*, B Hodges, J. Martin, & S. Steffensen (eds), [in press].
- Zukow-Goldring, Patricia (2011) How infants come to know "what everyone else already knows": built-in by evolution or by caregivers turning on new "apps"? in the *UCLA Center for the Study of Women Newsletter Special Issue Part I*, pp. 28-32. (J)

# E. Budget and Staffing

---

## 1. Organizational Chart



## 2. Changes in Budget and Staffing

**W**E HAVE MADE no significant changes in our core budget or staffing over the last year. The NEH award has enabled us to add three graduate student researchers, along with two part-time project archivists and a consultant from the Mazer Archive for the current AY 2011-12. These positions are directly tied to the NEH grant, which will be in place through April 2014. For a list of our staff and personnel, please see Appendix 17. For a budget overview, see our fiscal summary in Appendix 18.

## 3. Budget and Staffing Priorities

Our budget and staffing priorities are to continue our fundraising efforts and to maximize efficiency with staffing. In AY 10-11, three of four staff were new to CSW and our Assistant Director was also new to UCLA. Each has mastered their learning curve, and we expect our work in the coming academic year to be of even higher quality and more efficient.

As part of budget priorities, and fundraising efforts, we will expand our grant applications for our new research and community outreach projects as detailed in the next section.

# F. Strategic Plan

---

## Goals and Objectives

During the upcoming academic year, CSW has identified the following goals as part of our strategic plan:

- Pursue new fundraising initiatives and possibilities, some related to the new CSW interdisciplinary project *Life (Un)Ltd*, stewarded by Associate Director Rachel Lee, and others as part of multiyear plan coordinated with UCLA Development;
- Make progress with ongoing research projects—NEH, WSMALA, Policy Briefs (detailed above);
- Expand our highly successful graduate student initiative; and
- Enhance our community outreach through two new programs that will engage middle school and high school teachers, and by extension, their students.

### *A New Fundraising Initiative*

Almost all of CSW's major projects include external support from donors or major federal grants, and all make significant contributions to research, scholarship, community outreach, and student learning.

In the coming year, we will explore working on a strategic plan with Development for AY 11-12 (in process); focusing on donor relations; acquiring multiyear grants for the *Life (Un)Ltd* research project; and gaining grants for our community outreach and curriculum development initiatives.

### *Research Projects*

*Making Invisible Histories Visible* is our NEH funded collaboration with the June L. Mazer Lesbian Archive and the UCLA Library. In this first full year of funding for the project, we will process approximately 120 linear feet of the June L. Mazer Archive collections and will digitize approximately 1400 documents and photos. In addition we will create finding aids for each of the collections and these will be uploaded to the California Digital Library. Also in this year, we will digitize, process, and create finding aids for approximately 200 hours of analog audiocassette tapes. GSRs who are working on this project will be applying to give presentations about their work at the 2012 Society of American Archivists Conference.

## F. Strategic Plan

---

*Women's Social Movements in Los Angeles: Women in Higher Education.* In this year we will continue our did primary research, conducting oral histories with a focus on women who played key roles in Los Angeles higher education activism in the period of 1960 to 1999. Working with Teresa Barnett, Head of the Center for Oral History Research in the UCLA Library, we expect to conduct twelve oral histories (of three to four sessions each) during this year with two Graduate Student Researchers (GSRs). These will become part of the WSMALA sub collection at the Center for Oral History Research, UCLA Library. In addition, many of the materials will be accessible from a WSMALA portal on CSW's website and at the California Digital Library.

*Life (Un)Ltd* is the new research project proposed by CSW Associate Director Rachel Lee. It will address developments in the biosciences and biotechnology—including but not limited to tissue engineering, transplantation, ES cell therapy, population genotyping, and experiments in nutritive milieu—and their impact on feminist studies, especially those theorizing the circulation of biomaterials in relation to race and (neo)colonialism. Critiques of colonial medicine have made us aware of the way techniques of sanitation and public health have extended the imperial reach of white masculinity, and how colored and colonized bodies (and body parts) have been instrumental to the study of disease etiology and to the development of vaccines. This project will consider the following research questions: How have non-normatively gendered bodies, poor women's bodies, as well as gestational body parts served as opportune sites and sources for medical experimentation and the speculative contouring of life unlimited? What methods (historical materialist, psychoanalytic, ethnographically realist, deconstructive, cybernetic/systems theory) lend themselves to this feminist bioscientific critique? To what extent have feminist approaches to reproductive labor and childrearing (the emotional labor of cultivating human life) made connections with bioscientific research, practicalities, and ethics? Finally, how have literature and the arts shaped and reflected upon the biomedical imagination? In its first year, this project will involve three phases over the three quarters. In Fall quarter, an interdisciplinary working group of 12-15 faculty and graduate students doing research on this topic will convene to discuss external readings and their research in process. In the second quarter, this group will convene two or three workshops to discuss papers produced by the group members intended for publication. In Spring quarter, CSW programming will convene experts in this field from around the world.

In Fall 2011, we will apply to UCHRI for a second year of funding, as well as for other grants pertinent to this research.

# F. Strategic Plan

---

## *Graduate Student Initiative*

Through funding, programming, and employment and training opportunities, CSW has long supported and advanced the research and professional careers of graduate students at UCLA. In the coming year, we will be adding a new funding opportunity using the Irving and Jean Stone Endowment. The “Irving and Jean Stone Research Innovation Fund” will now be available to doctoral students at the research phase of their dissertation work. We will award grants of \$1000 to \$3000 to students whose work is in the area of women, gender, and/or sexuality and who need resources to conduct and/or analyze the results of their research. A competitive award, this will honor students whose work is exceptional and innovative.

Training opportunities for Graduate Student Researchers (GSRs) remain one of the hallmarks of this initiative. This year we are adding employment and training opportunities for seven new GSRs. One of these positions is for GSR to conduct oral histories as part of our *WSMALA Higher Education* research project and who will join a seasoned GSR already doing this work. This student will receive training from Teresa Barnett, Head of the Center for Oral History, and on-going instruction from Assistant Director Julie Childers. Four new GSRs will be gaining experience in processing and digitizing archival collections through the *Making Invisible Histories Visible* NEH project. Lizette Guerra and Michael Stone, the project archivists, will be training three of these students. In addition, Kelley Bachli, Head of Collection Management, UCLA Library Special Collections, will be working with one of these students through the Library’s CFPRT (Center for Primary Research and Training) program. Our two new programs for community outreach, detailed below, will involve a graduate student curriculum developer, who will be trained and supervised by Assistant Director Childers, who has experience in this area. In addition, we may add one more position that will be exploring ways to make the research and curriculum materials available on the website. This GSR will be trained by Managing Editor Brenda Johnson-Grau.

## *New Programs for Community Outreach*

*Women’s Social Movement Activities in Los Angeles: Teacher Training.* This year we will begin work on a two-year project to make accessible our research on Women’s Social Movement Activities in Los Angeles (WSMALA) to secondary school teachers who would like to incorporate it into their curriculum. We will begin by conducting focus groups with local teachers to assess their needs and interests in a final product. Based on this, we will begin

---

building a WSMALA page on our website that will be a portal for secondary school teachers to access these resources, which will include our WSMALA timelines, oral history interviews, annotated bibliographies, and lesson plans. This project will culminate with a summer teacher training program in the summer of 2013 and we plan to write grant proposals to cover the costs of this offering.

*LGBT History Curriculum Development Initiative.* In July of 2011, California Governor Jerry Brown signed a law that requires that gay and lesbians accomplishments in California and the country be made part of social science curriculum and added to textbooks. This requirement will take effect in January 2012. Leveraging our partnership with the June L. Mazer Archive and ONE Archive, a national LGBT archive in Los Angeles, we propose to develop ten curricular units for social science teachers that could be used in grades 9 to 12. Units will feature primary research materials as a method for historical investigation and will be available via the CSW website by June 2013. We intend to approach other units on campus for collaboration in this effort and to write grant proposals that would fund the development of this curriculum, as well as to publicize its availability.

Following this report are appendices that document all of our research, events, outcomes, and budgets. Please see these for additional information.